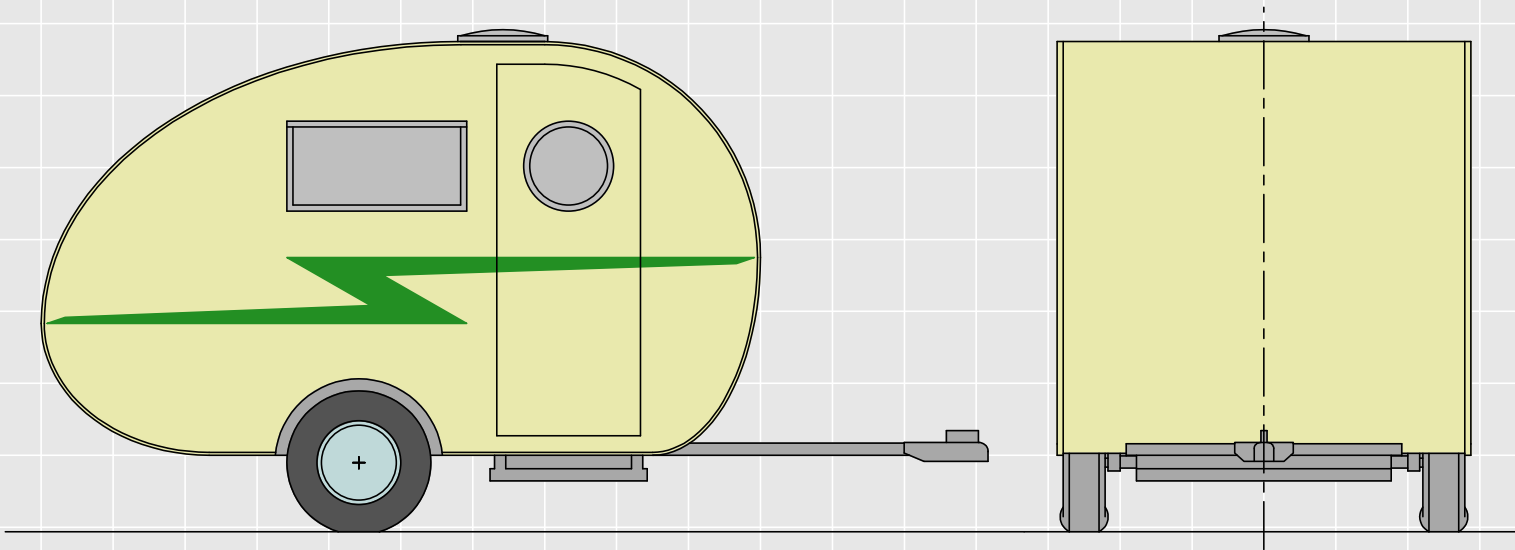
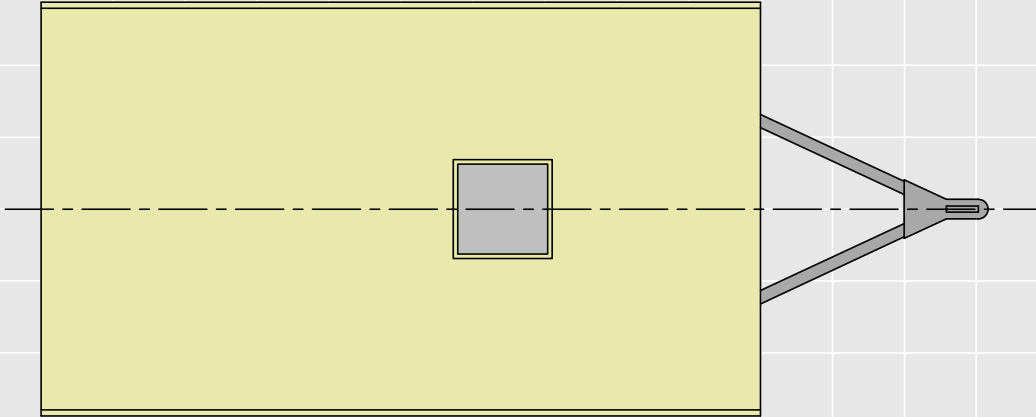
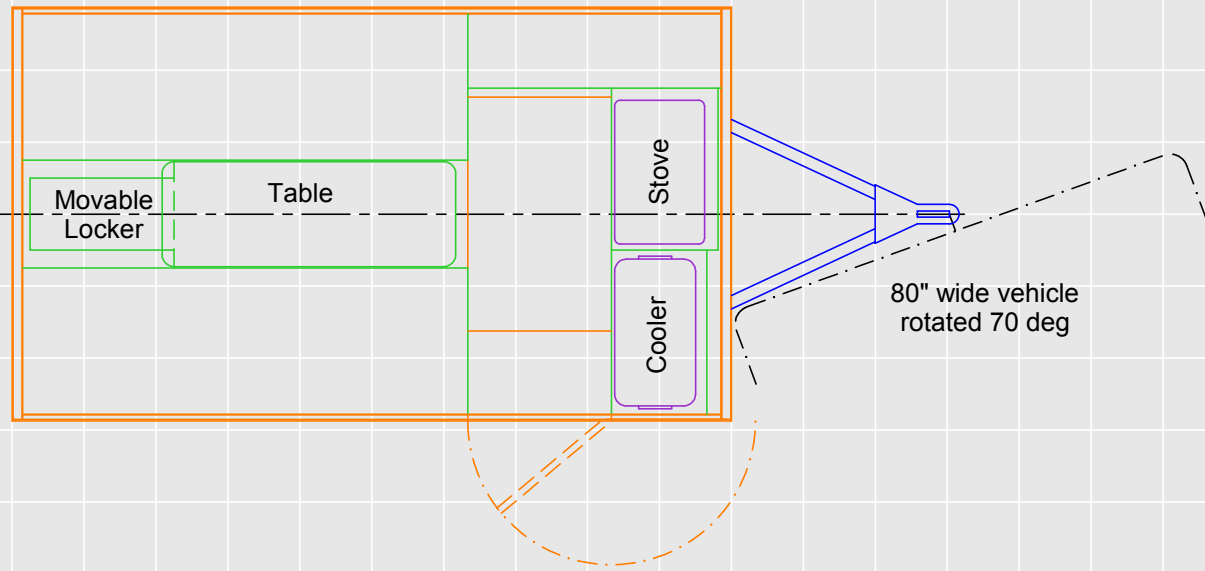


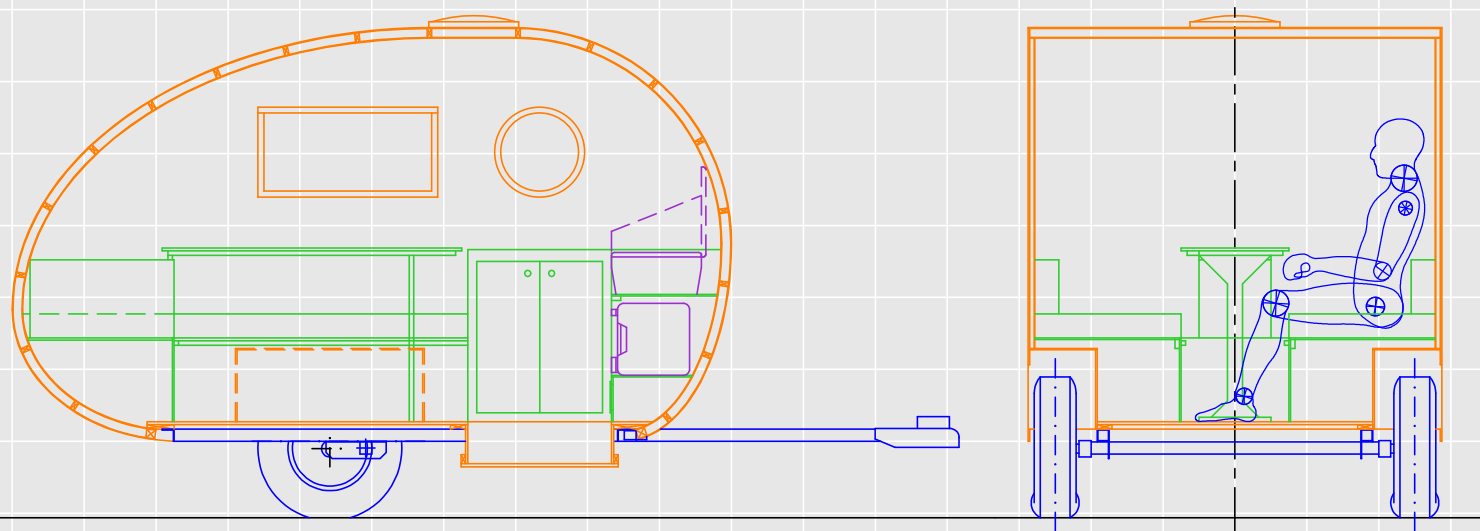
WIDGET 6
Body 120" L x 69" W x 69" H



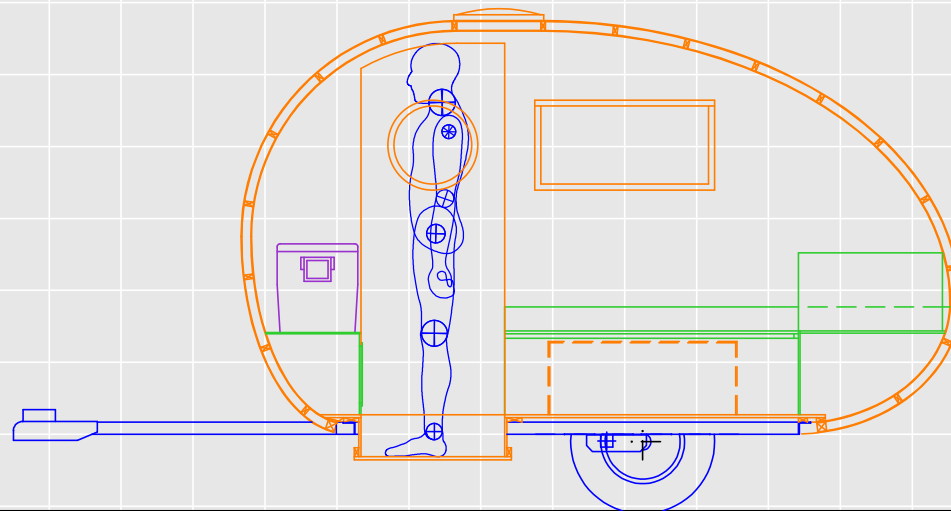
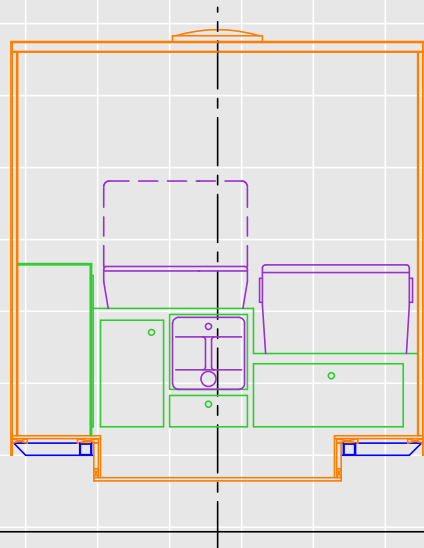
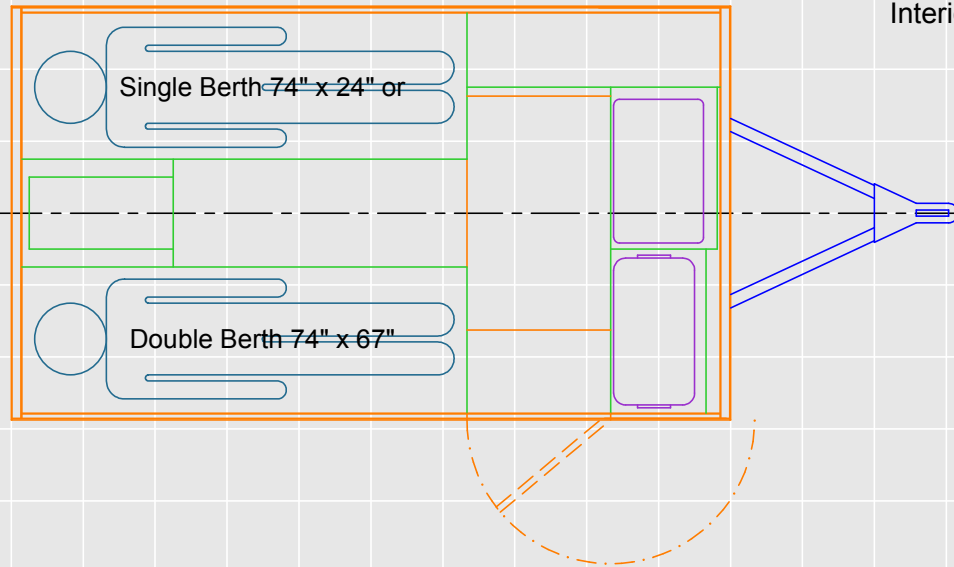
WIDGET 6
Interior 1



80" wide vehicle
rotated 70 deg

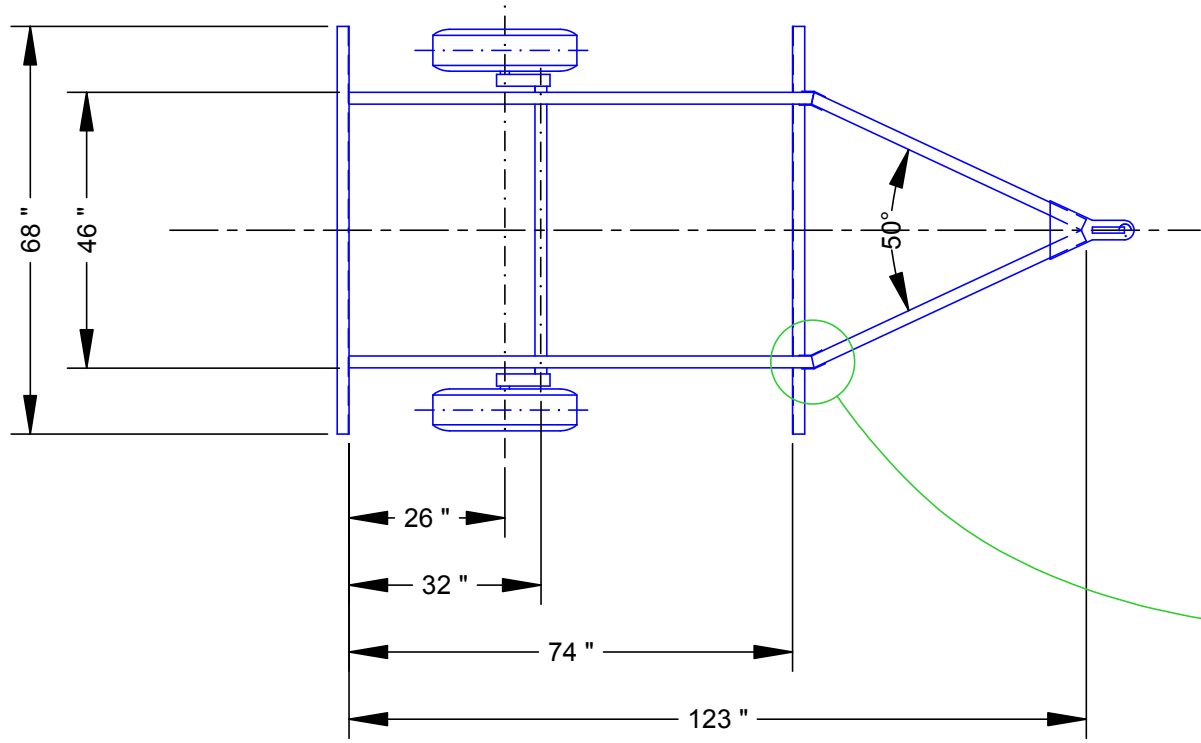


WIDGET 6
Interior 2

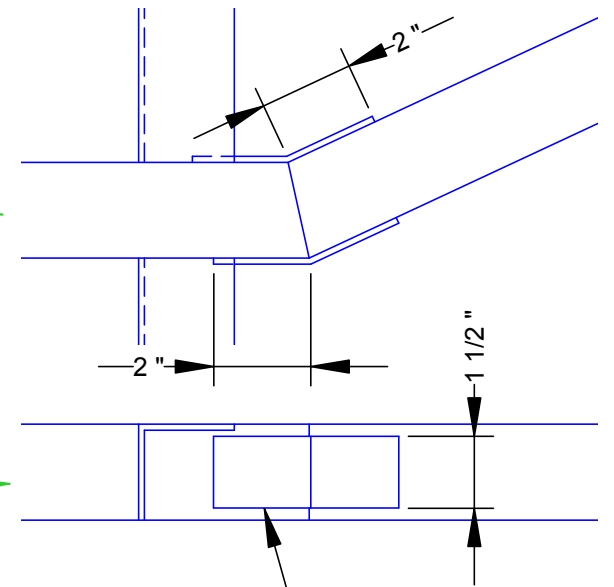
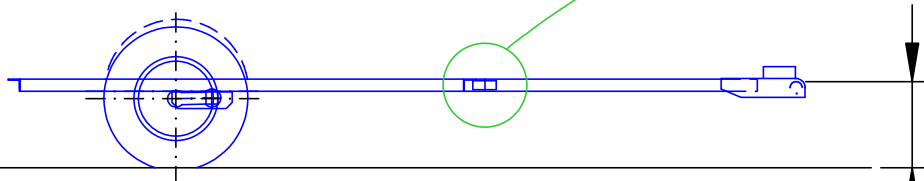


Person 69" tall

WIDGET 6
Chassis
1:32 & 1:4

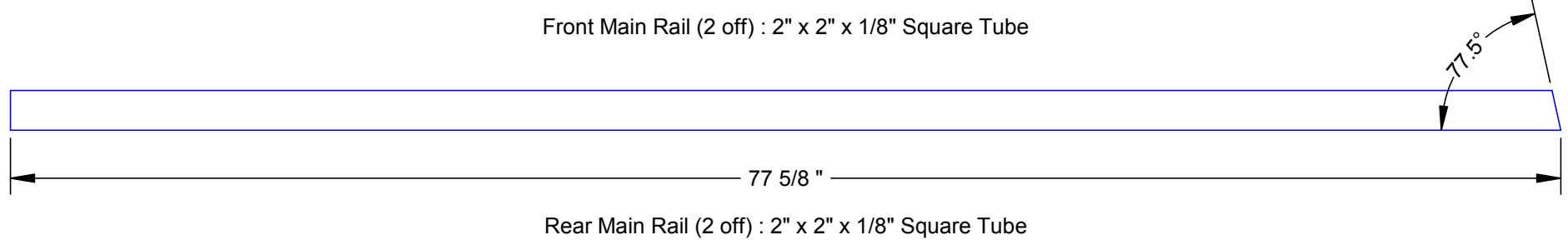
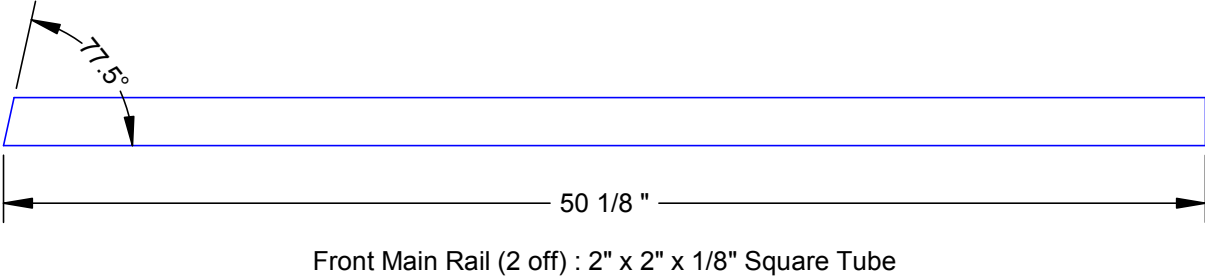
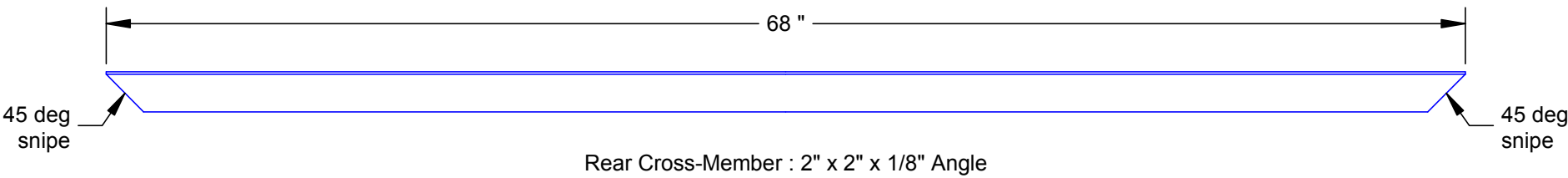
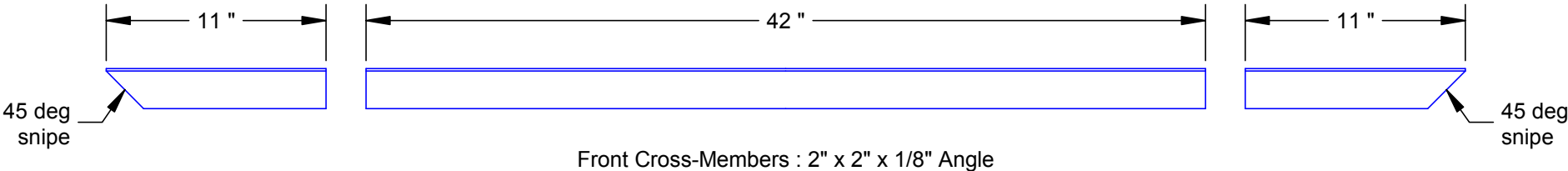


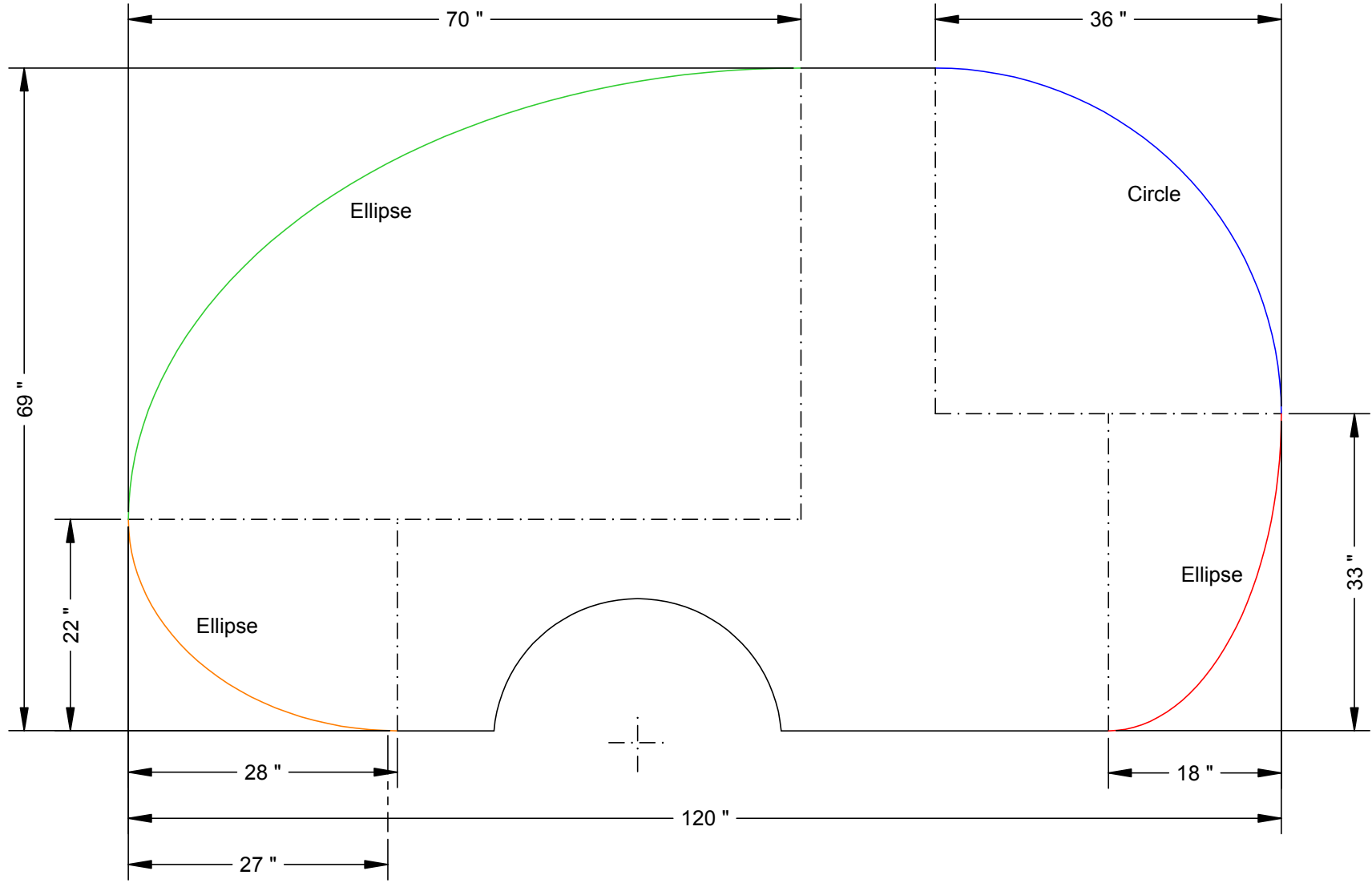
175/80R13 on Dexter #9,
60" hubface, 0" offset,
7" overhang, 22.5deg down,
max capacity 2200 lb



~14 1/2"

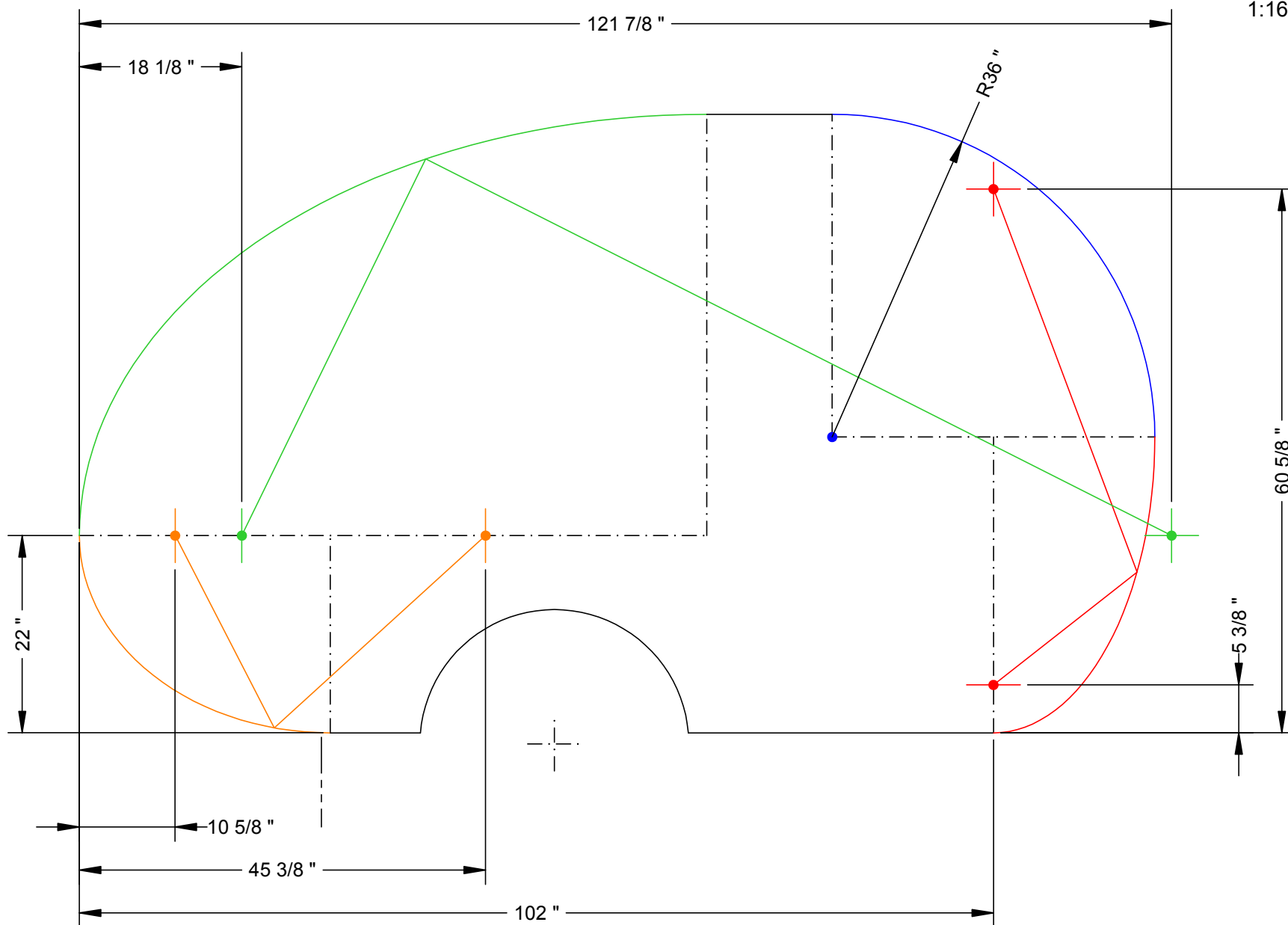
WIDGET 6
Chassis Components
1:8



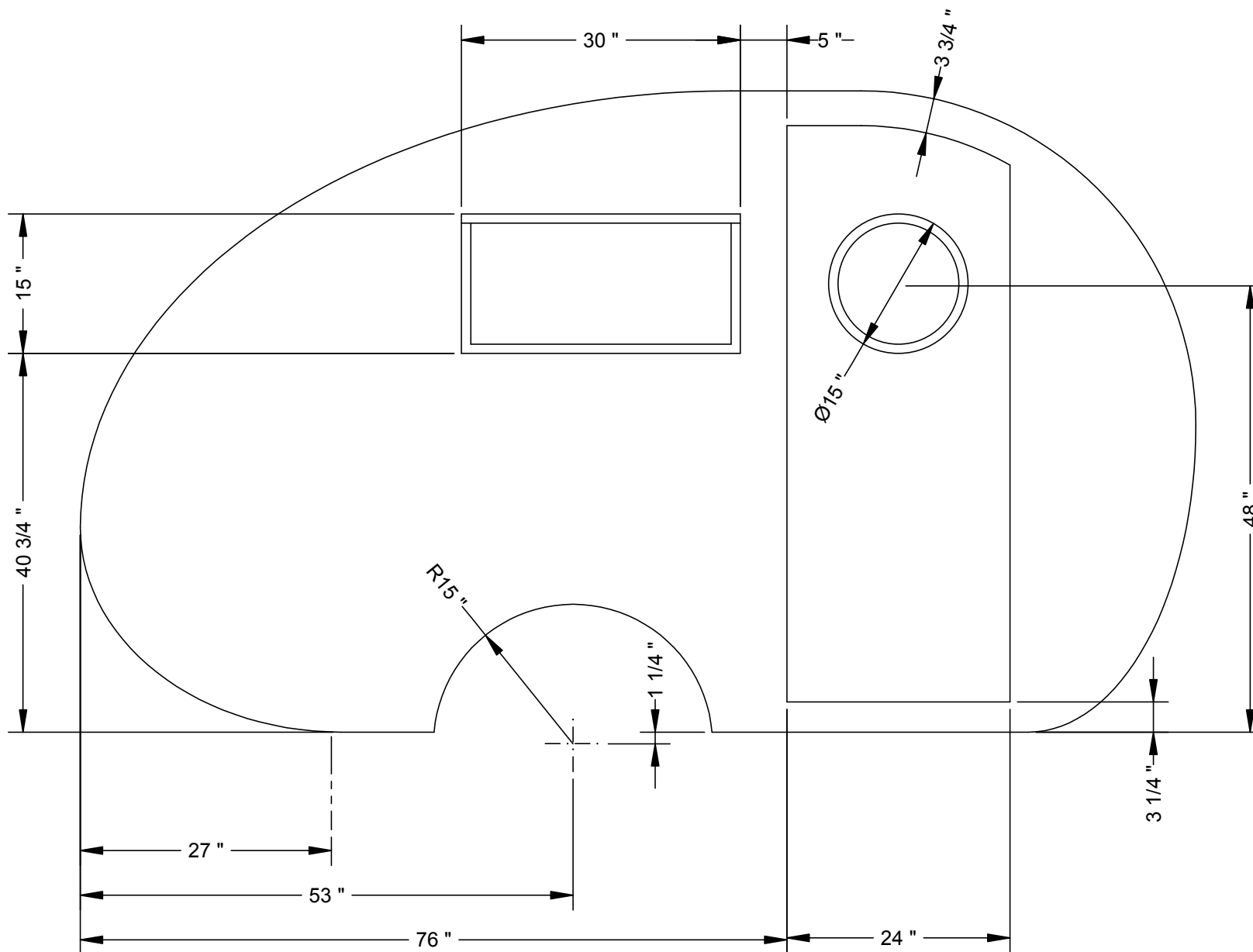


Longitudinal datum is forward
face of rear chassis cross-member

Side Panel Geometry

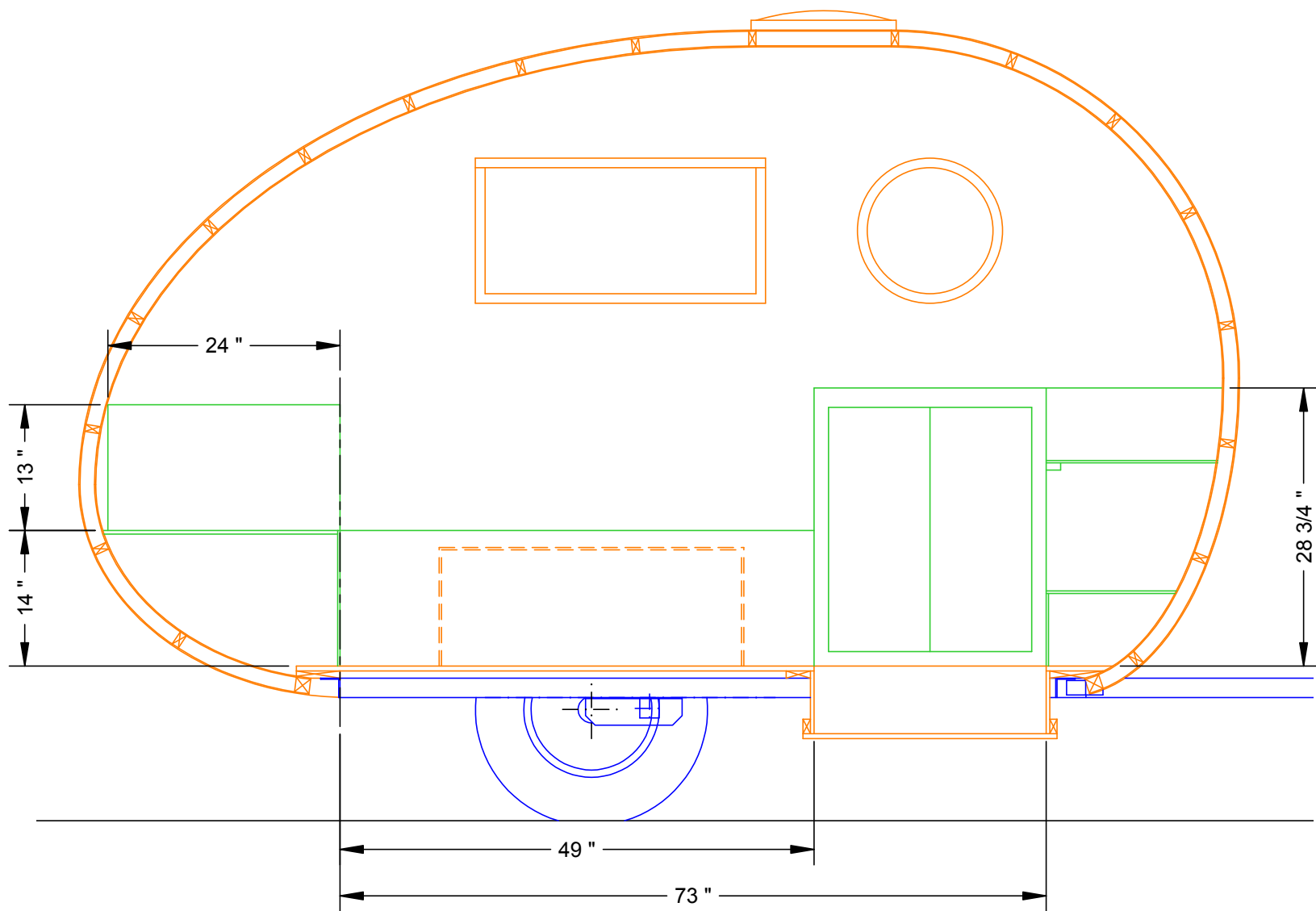


Side Panel Geometry



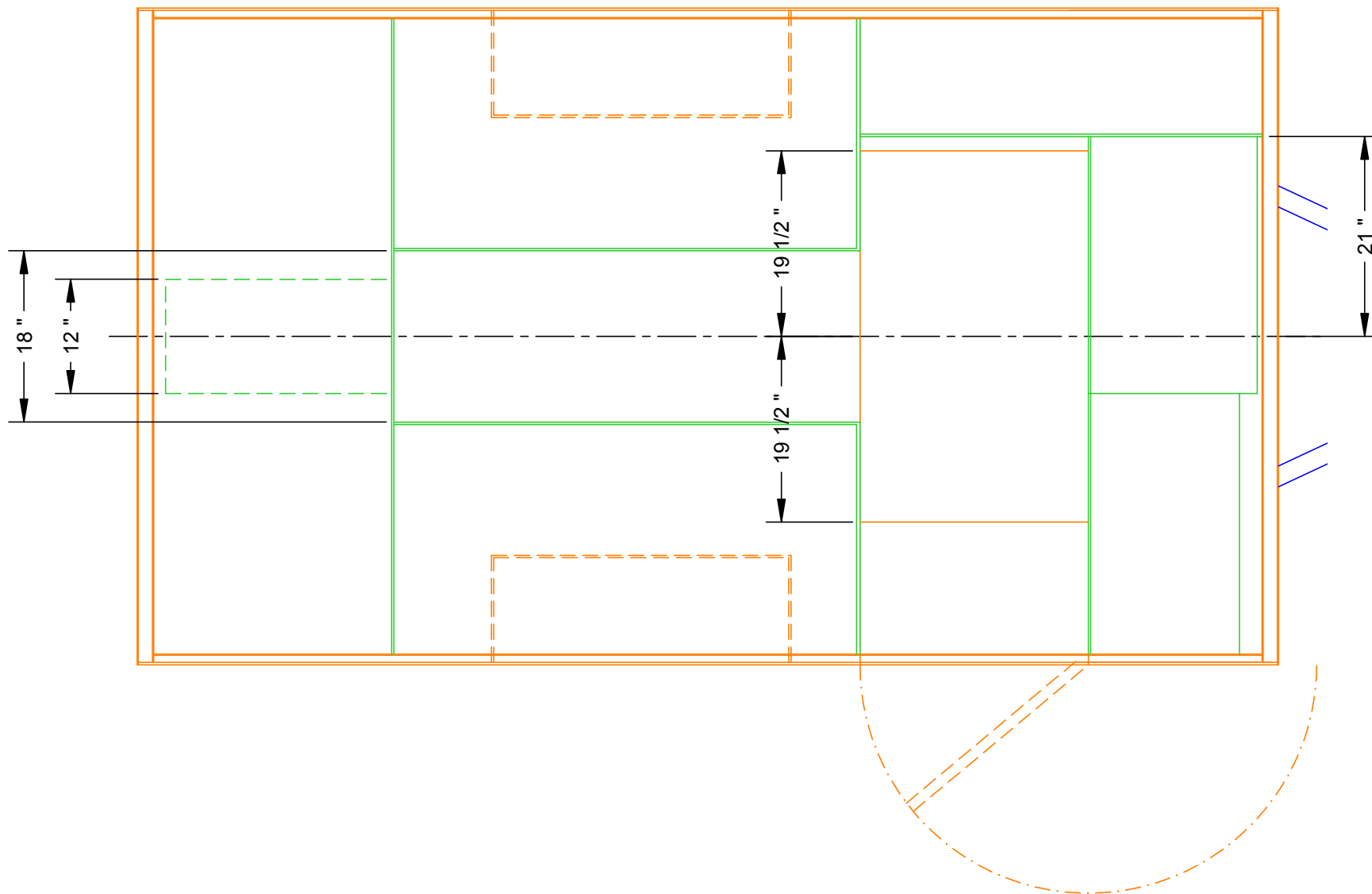
Longitudinal datum is forward
face of rear chassis cross-member

Side Panel Geometry

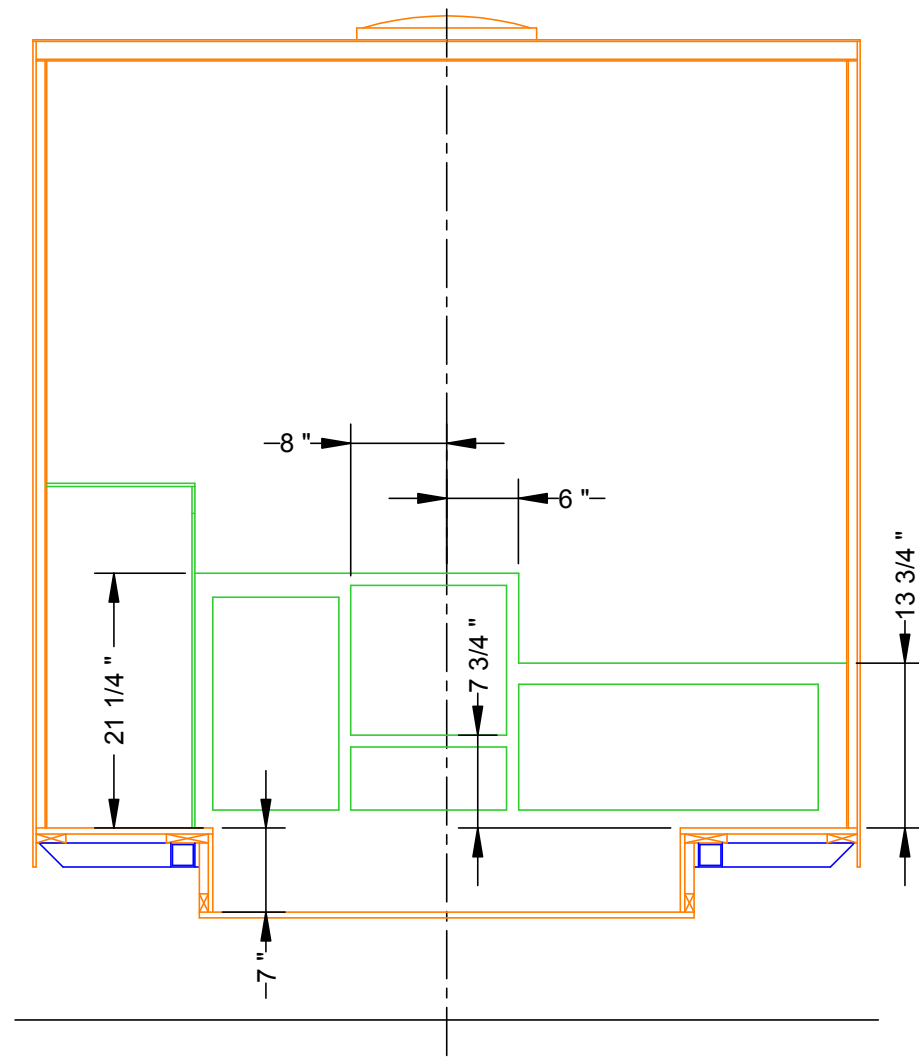
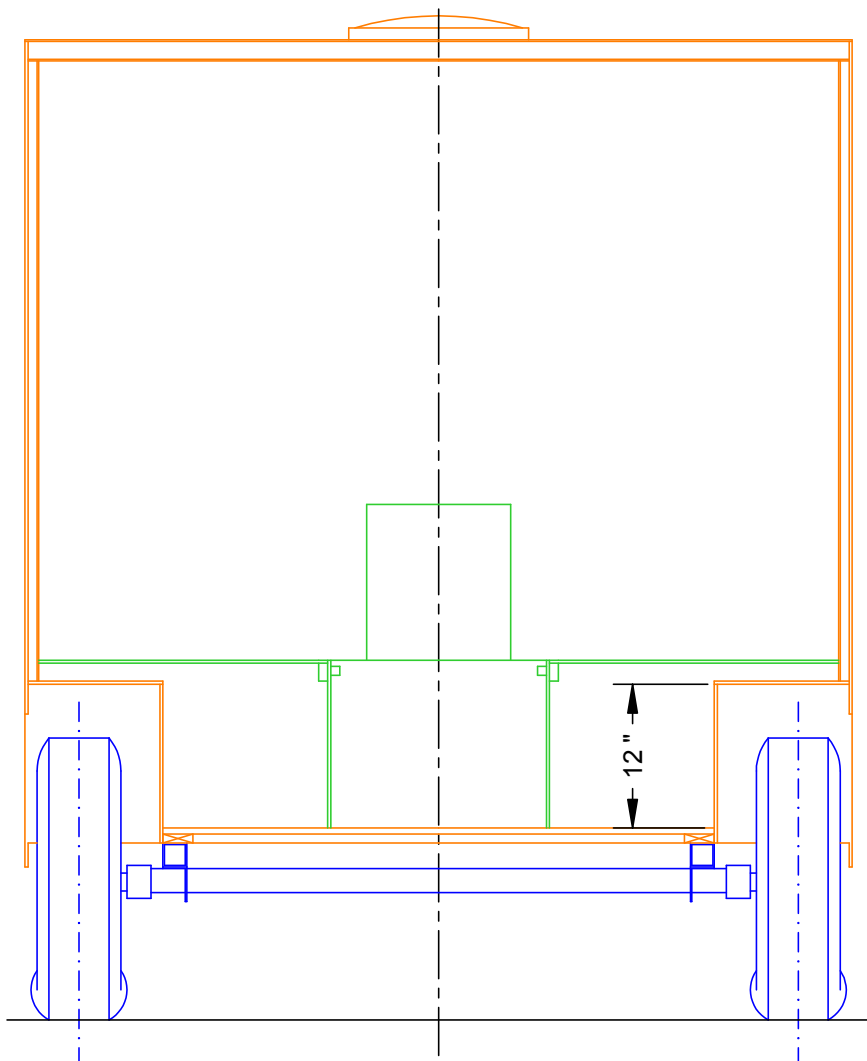


Longitudinal datum is forward
face of rear chassis cross-member
= front face of bunk bulkhead

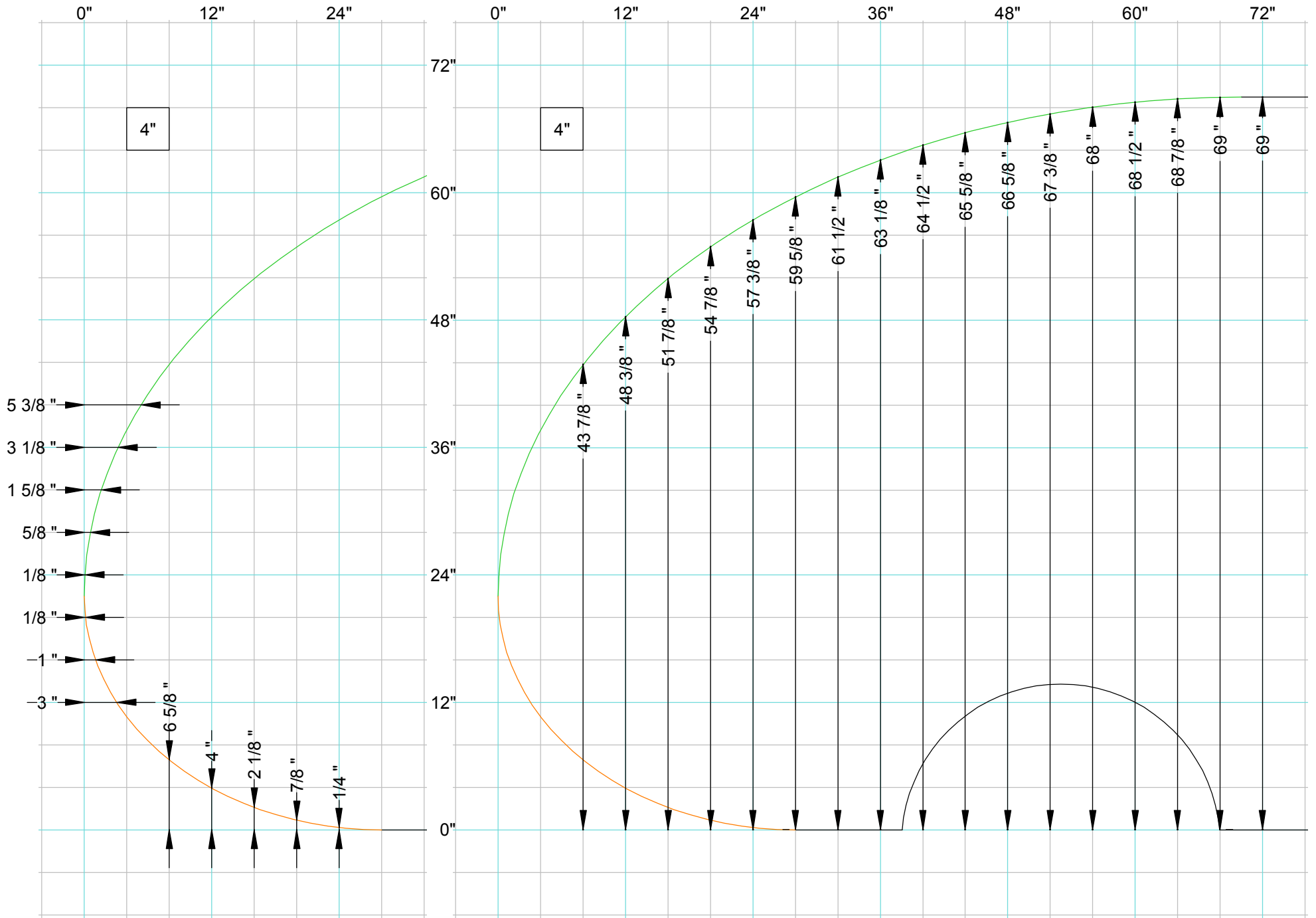
Internal Geometry



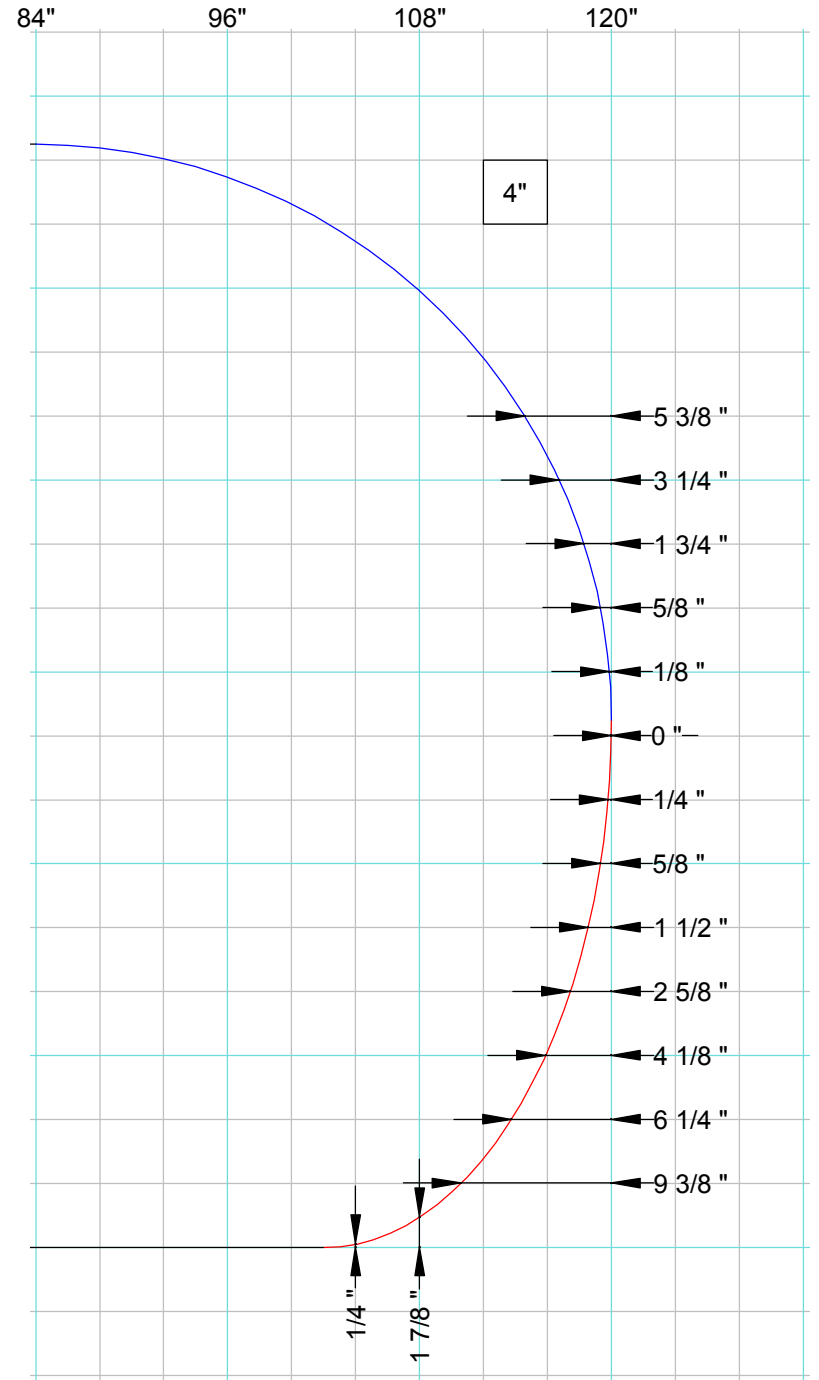
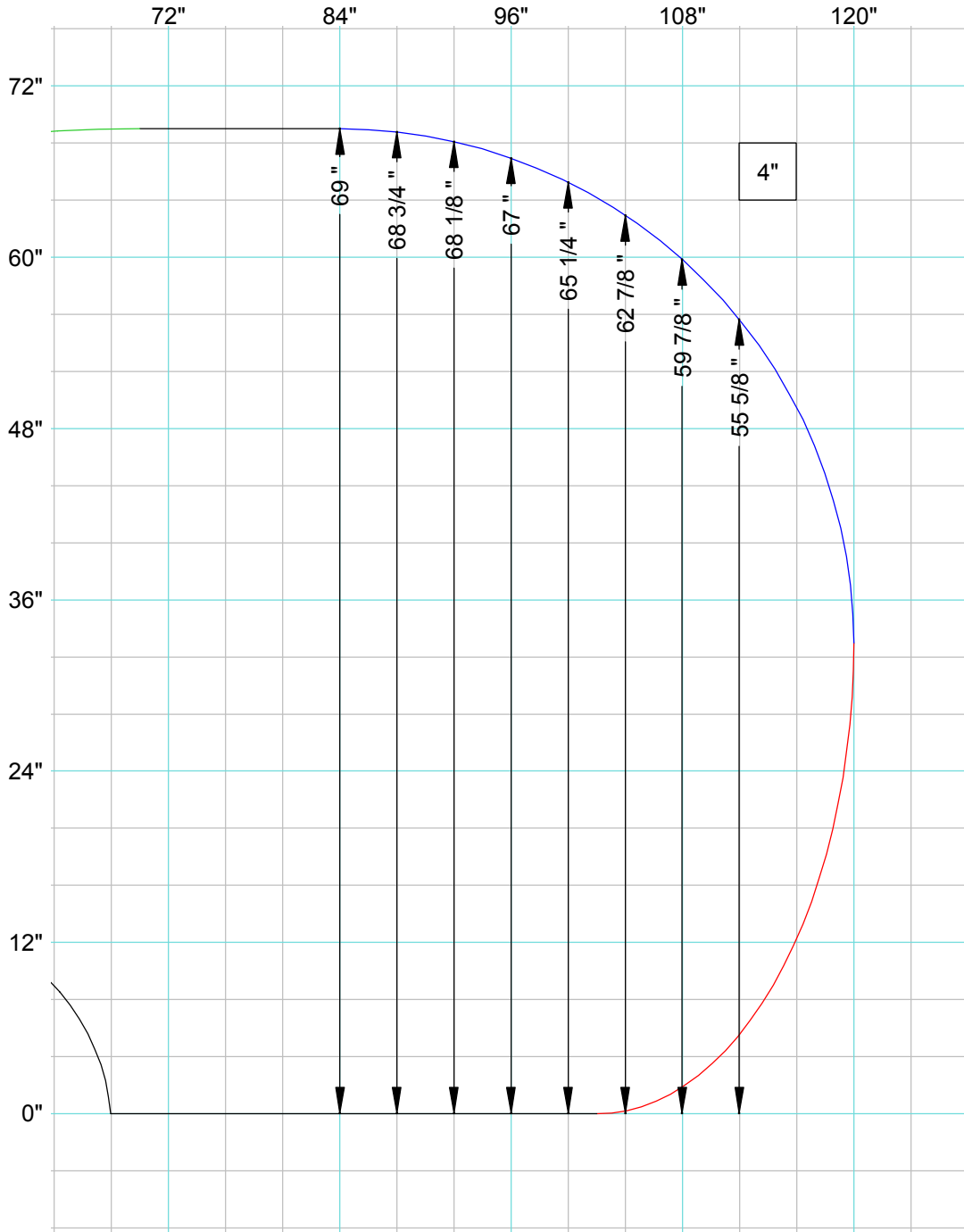
Internal Geometry - Plan View under Bunk Tops



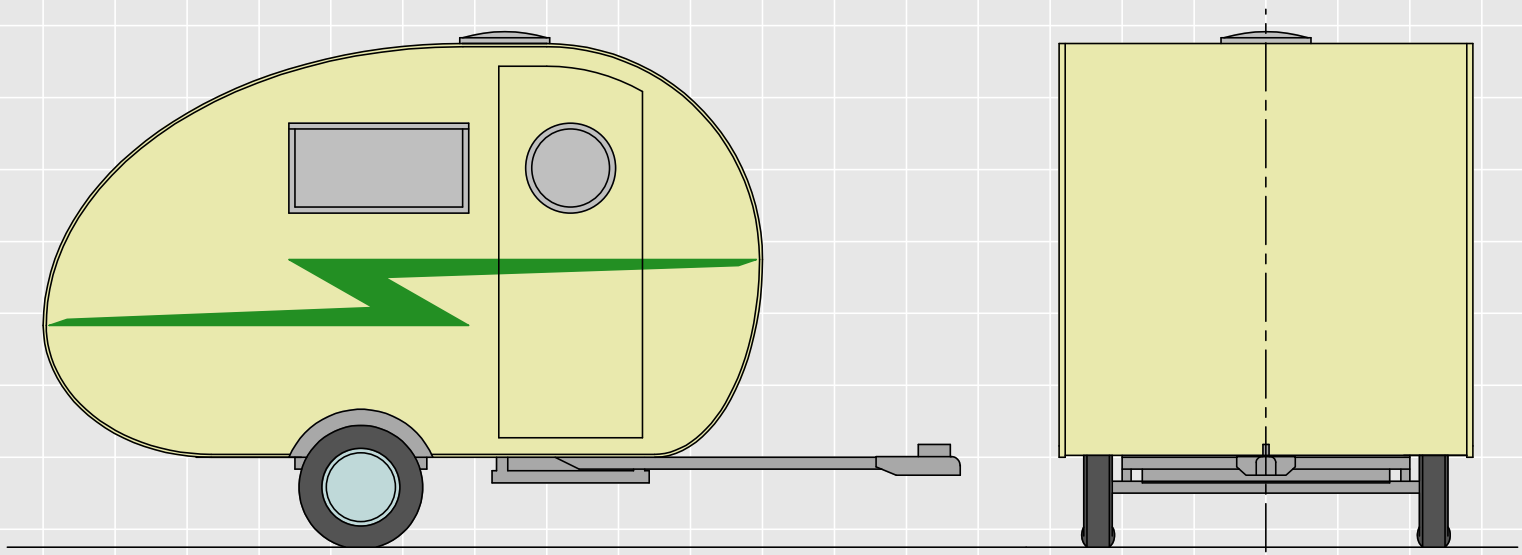
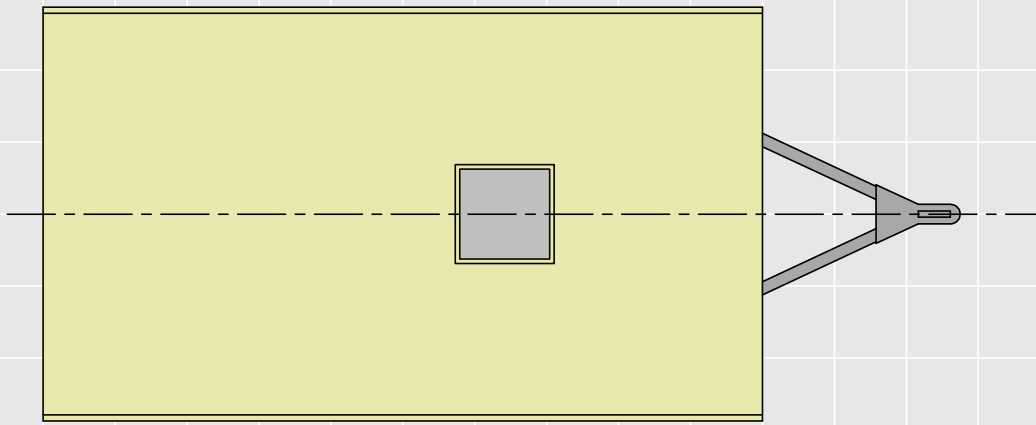
Internal Geometry



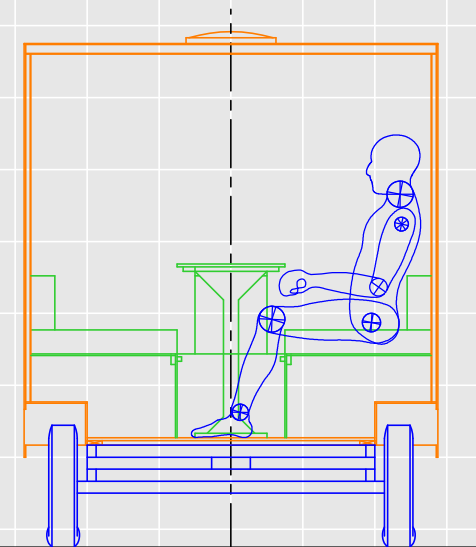
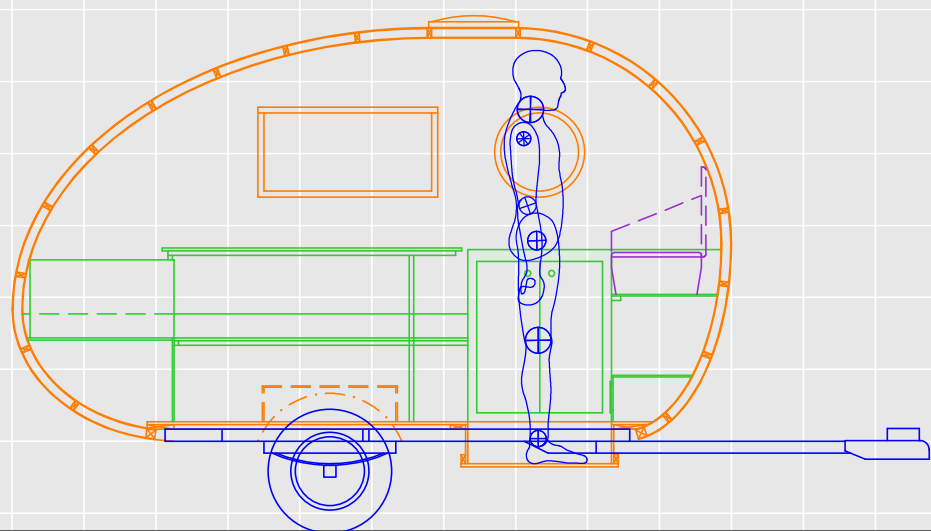
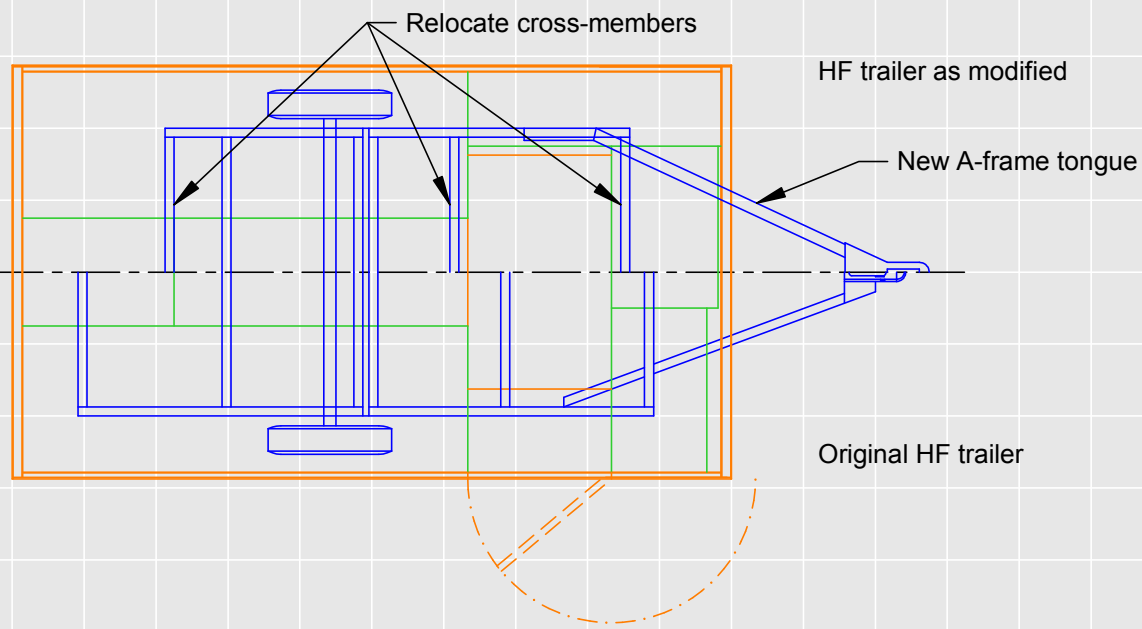
WIDGET 6 Geometry 8 1:12



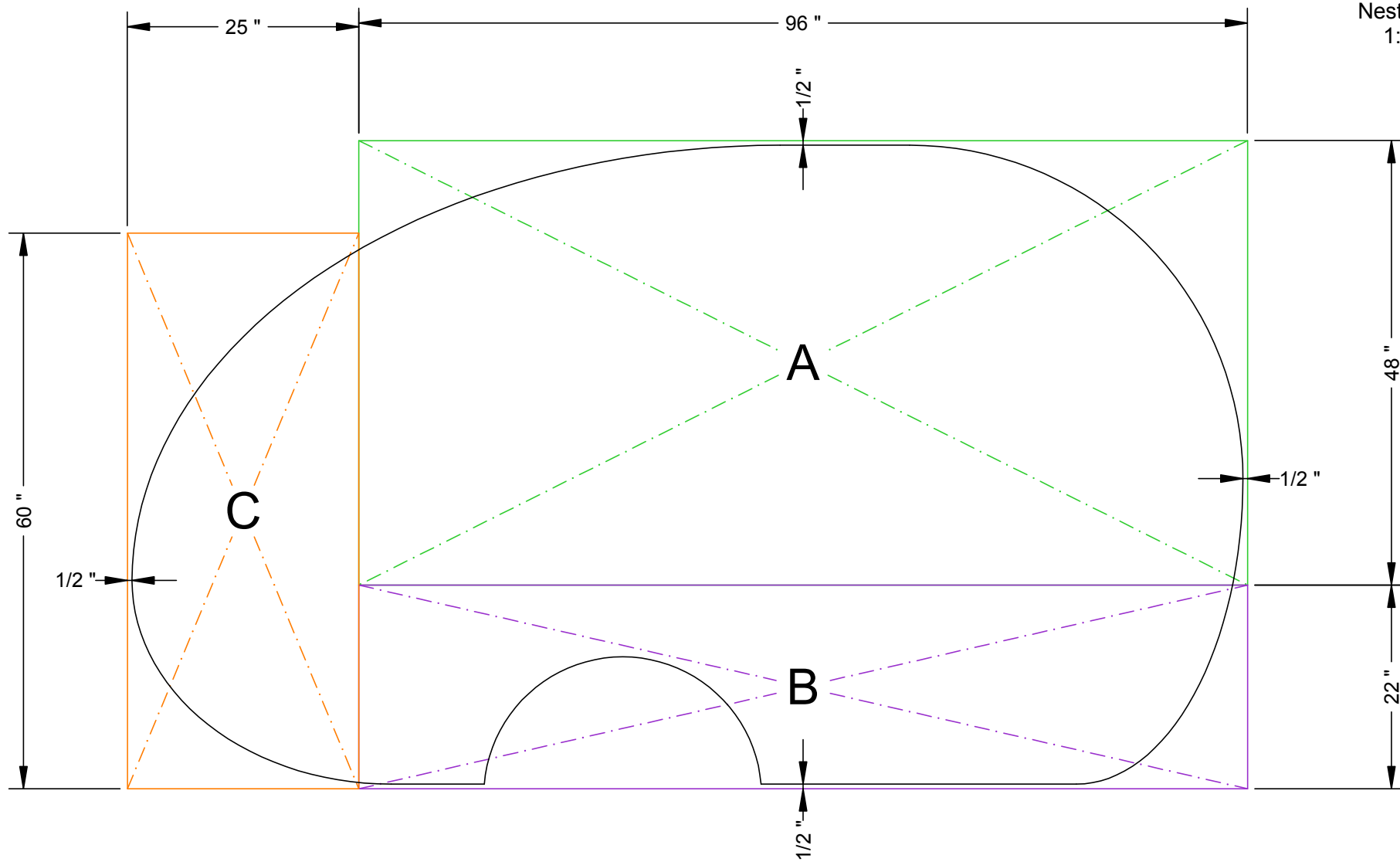
WIDGET 6
HF Trailer
Exterior



WIDGET 6
HF Trailer
Interior

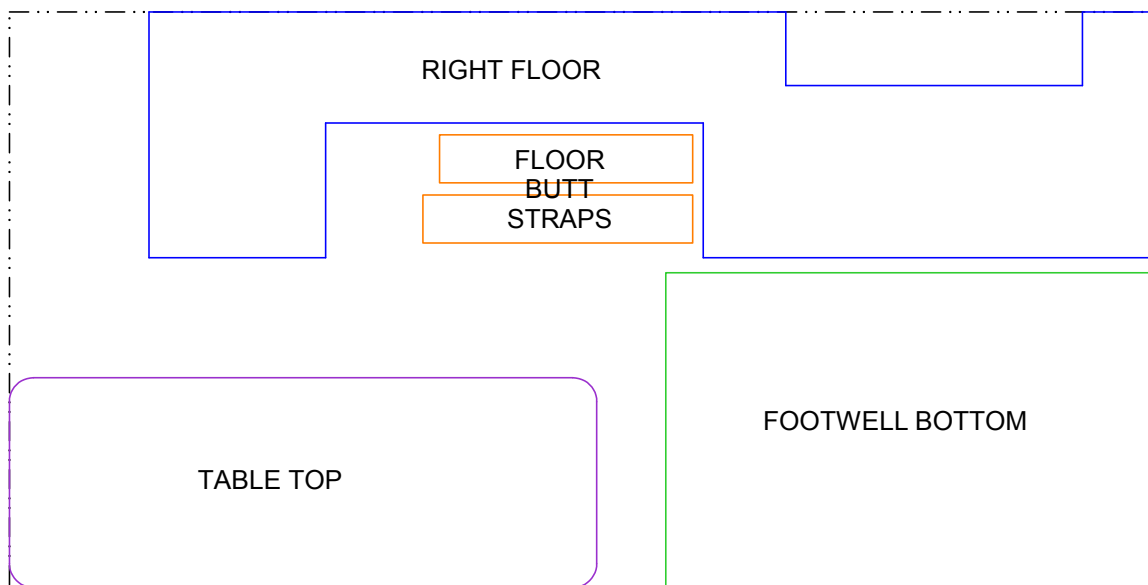
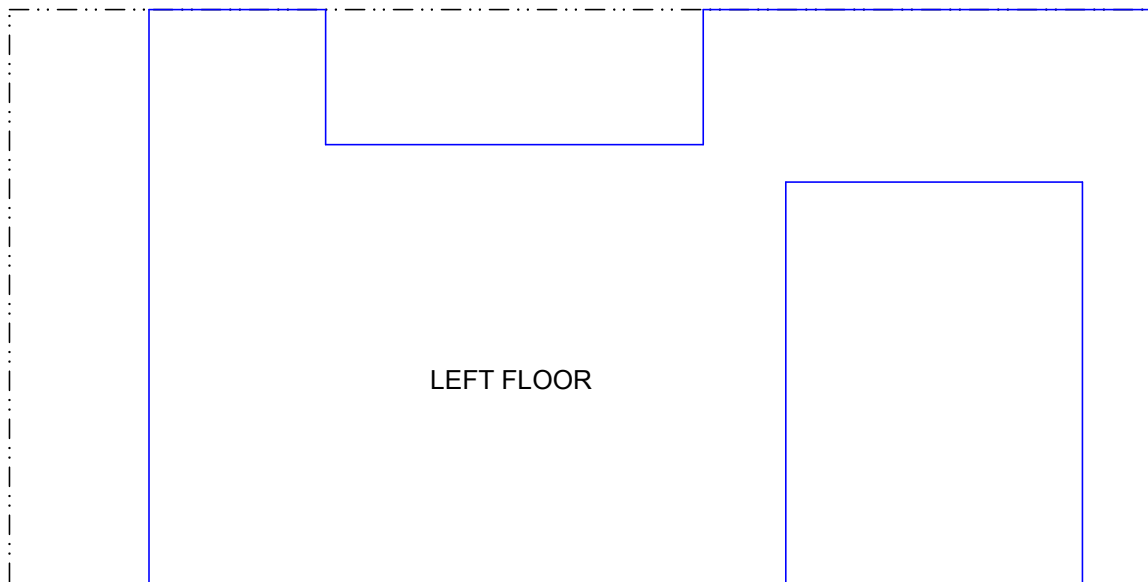


WIDGET 6
Nesting 1
1:16

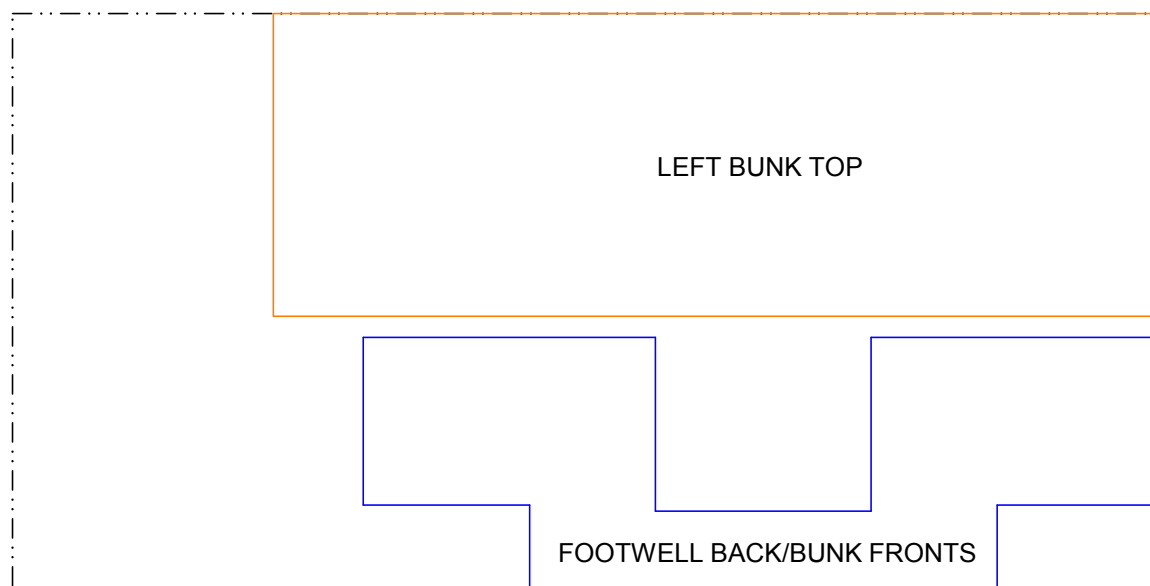


See structure drawing for details of butt and seam joints

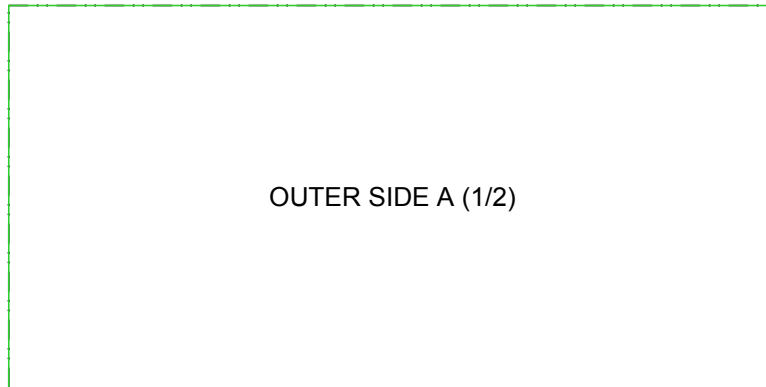
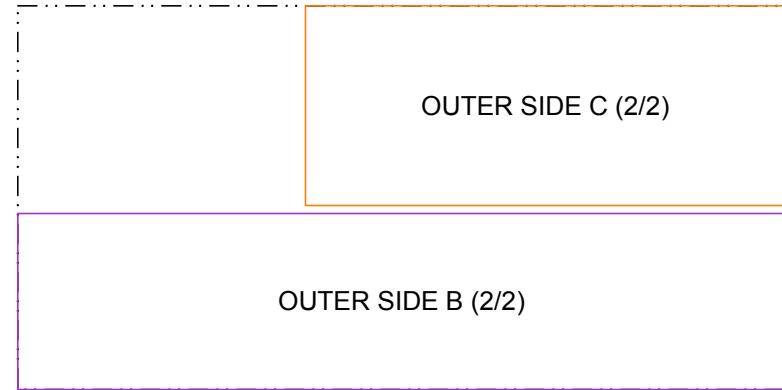
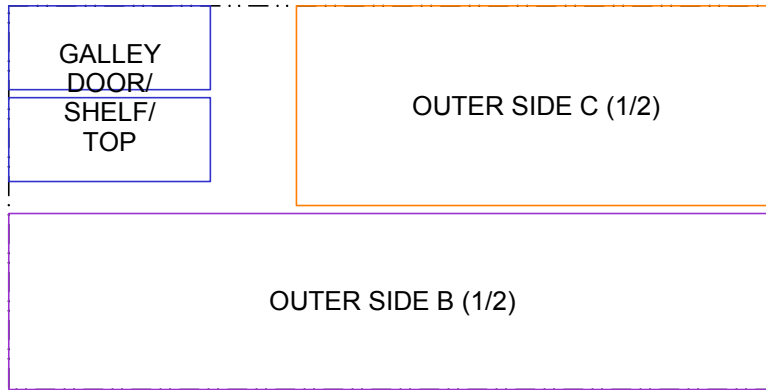
WIDGET 6
Nesting 2
1:16
1/2" ply



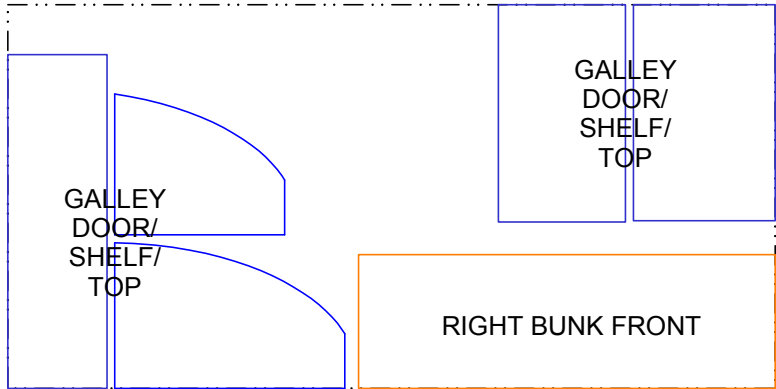
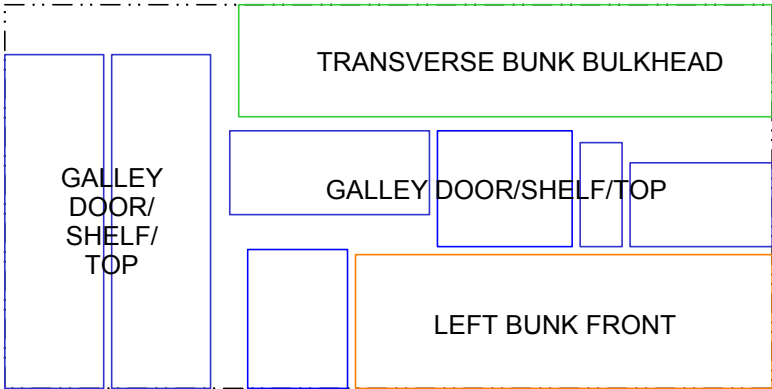
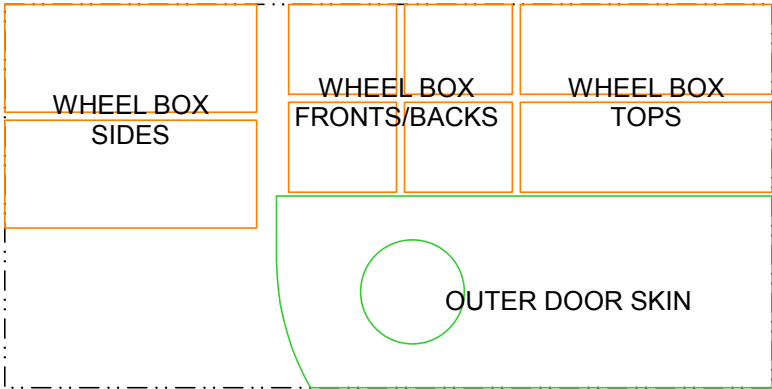
WIDGET 6
Nesting 3
1:16
3/8" ply



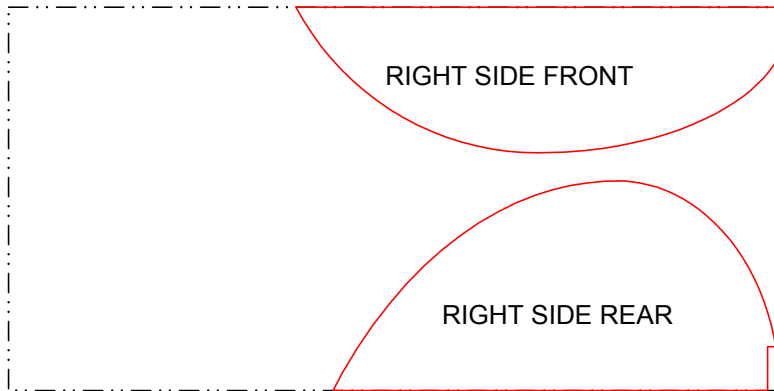
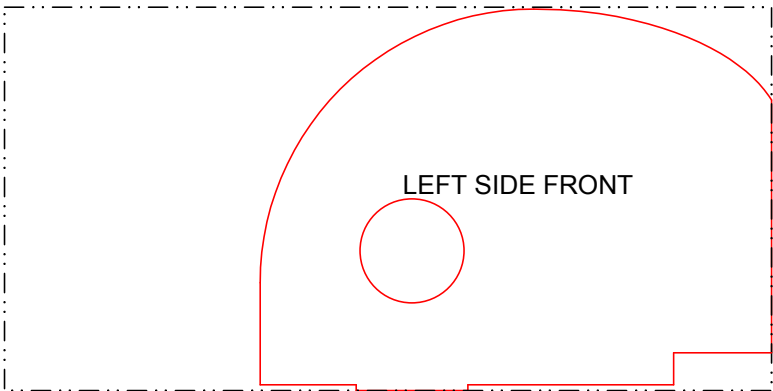
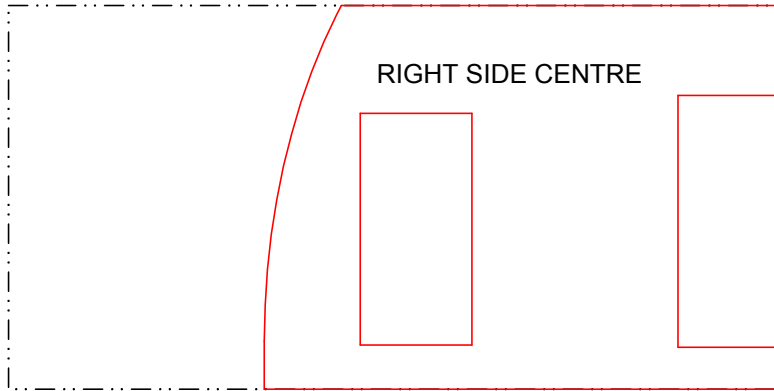
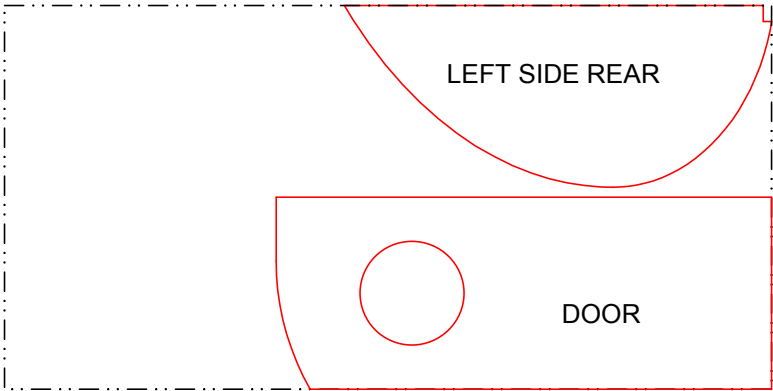
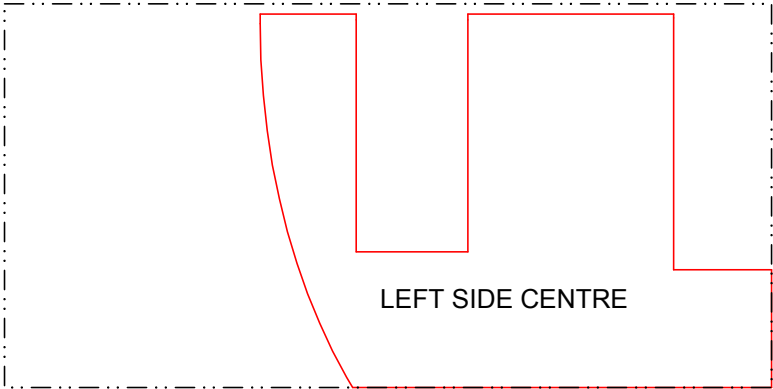
WIDGET 6
Nesting 4
1:24
1/4" ply
(see also
nesting 5)



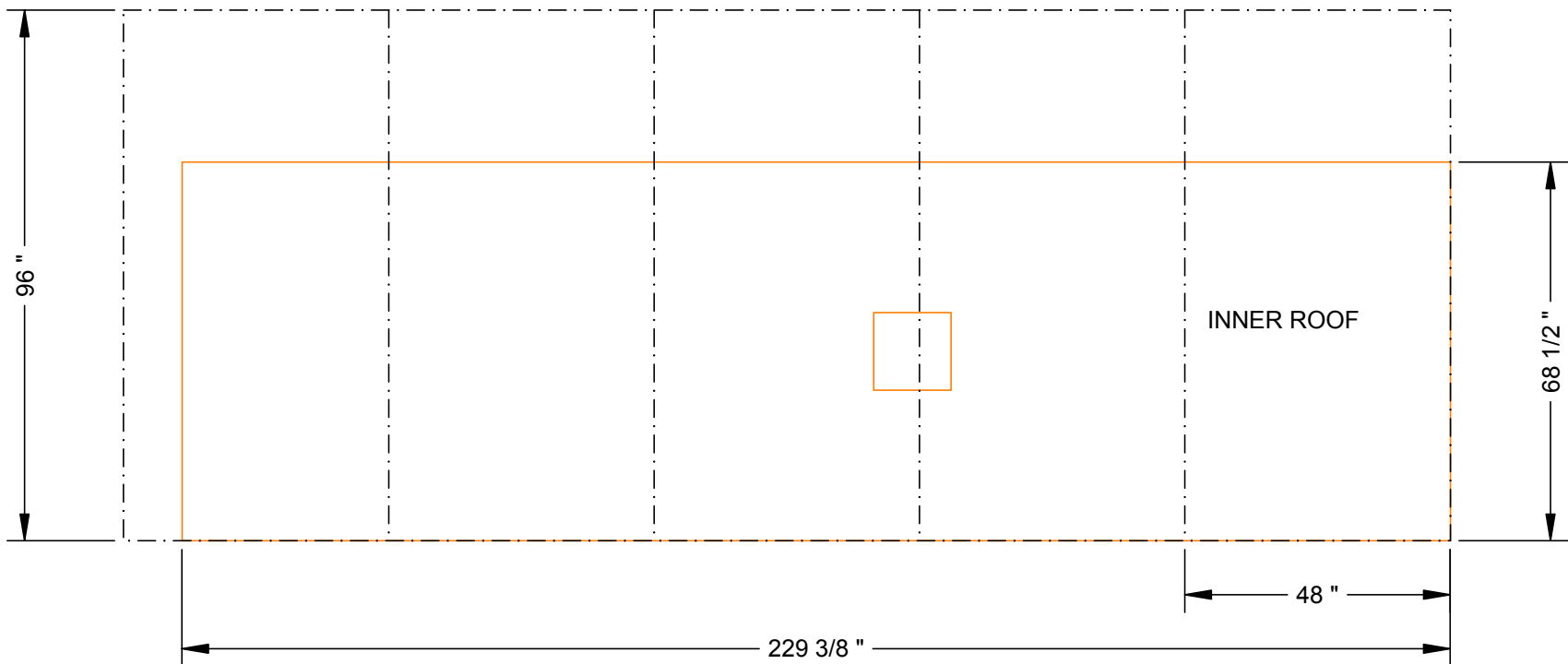
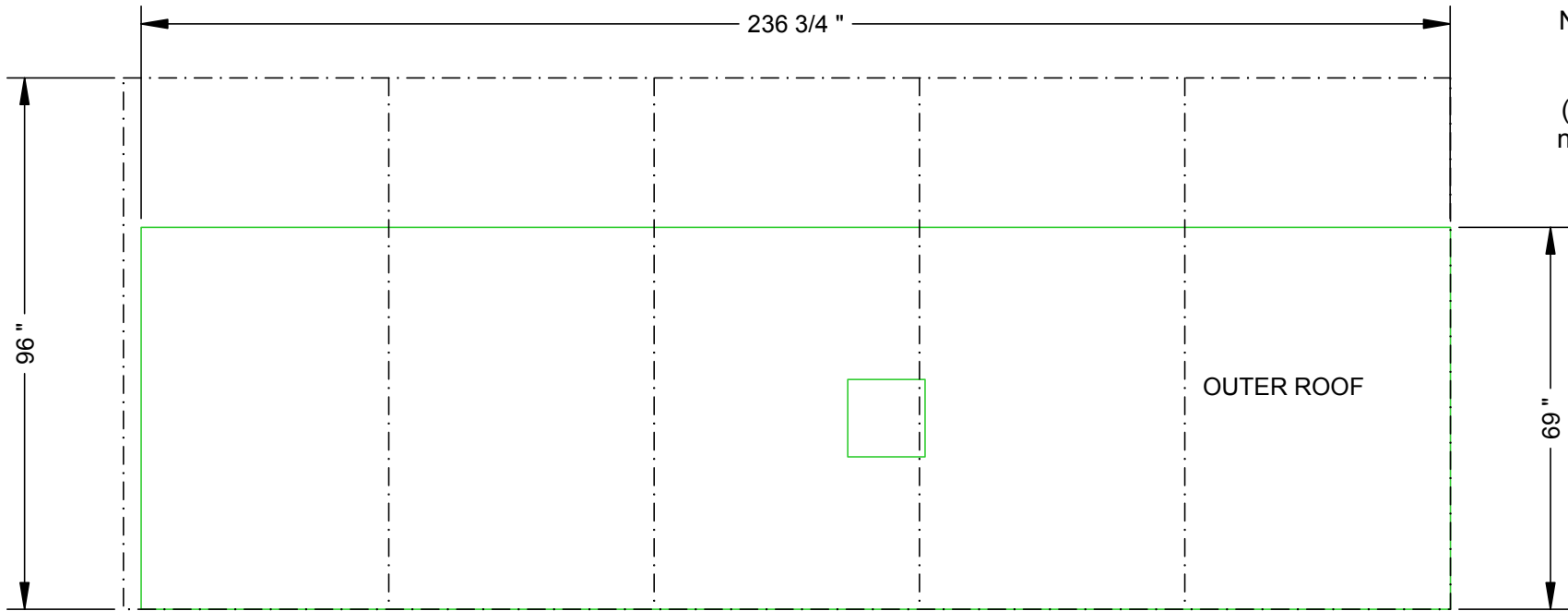
WIDGET 6
Nesting 5
1:24
1/4" ply
(see also
nesting 4)



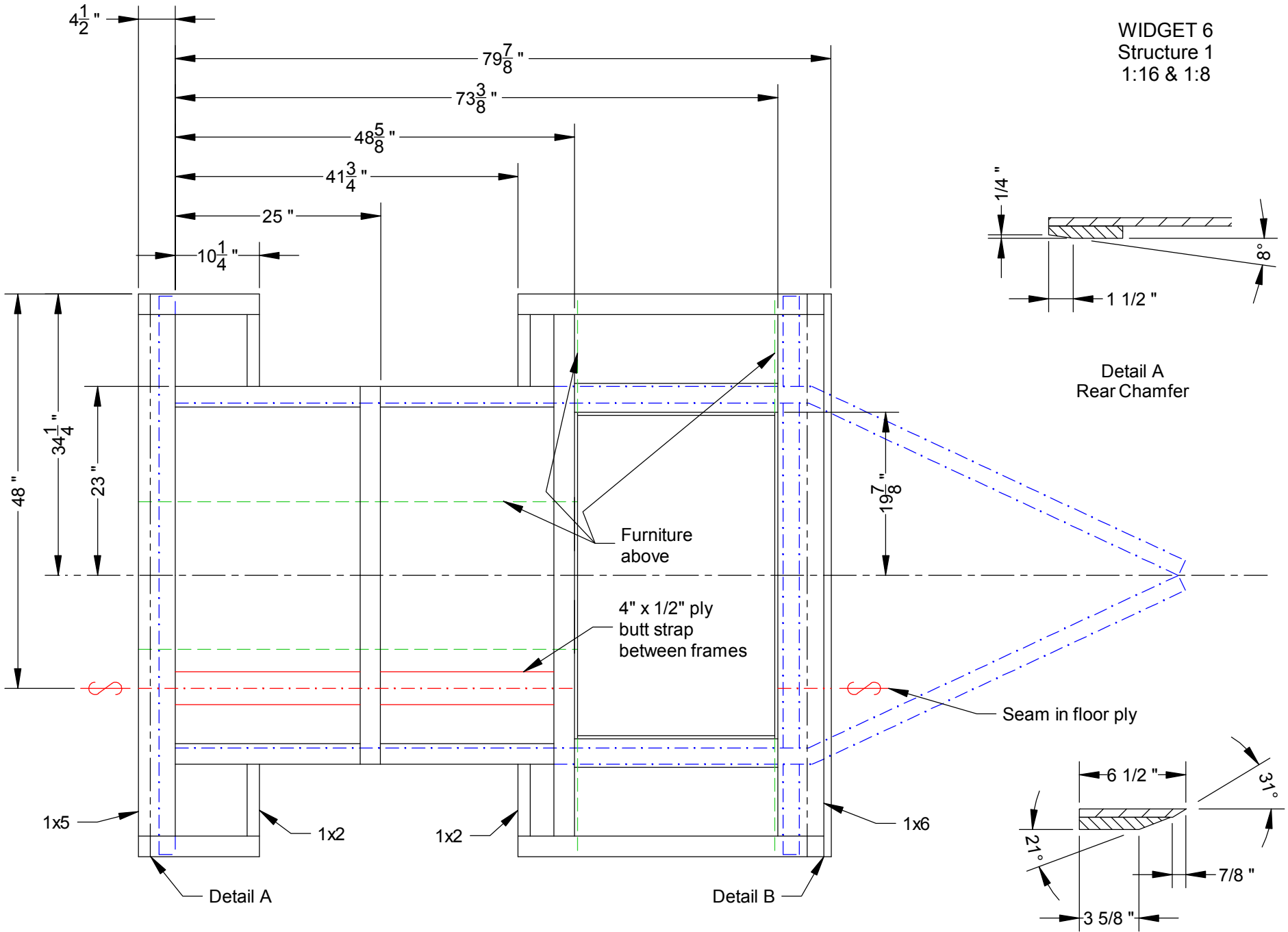
WIDGET 6
Nesting 6
1:24
1/8" ply
(see also
nesting 7)



WIDGET 6
Nesting 7
1:32
1/8" ply
(see also
nesting 6)



Longitudinal datum is front face of rear cross-member

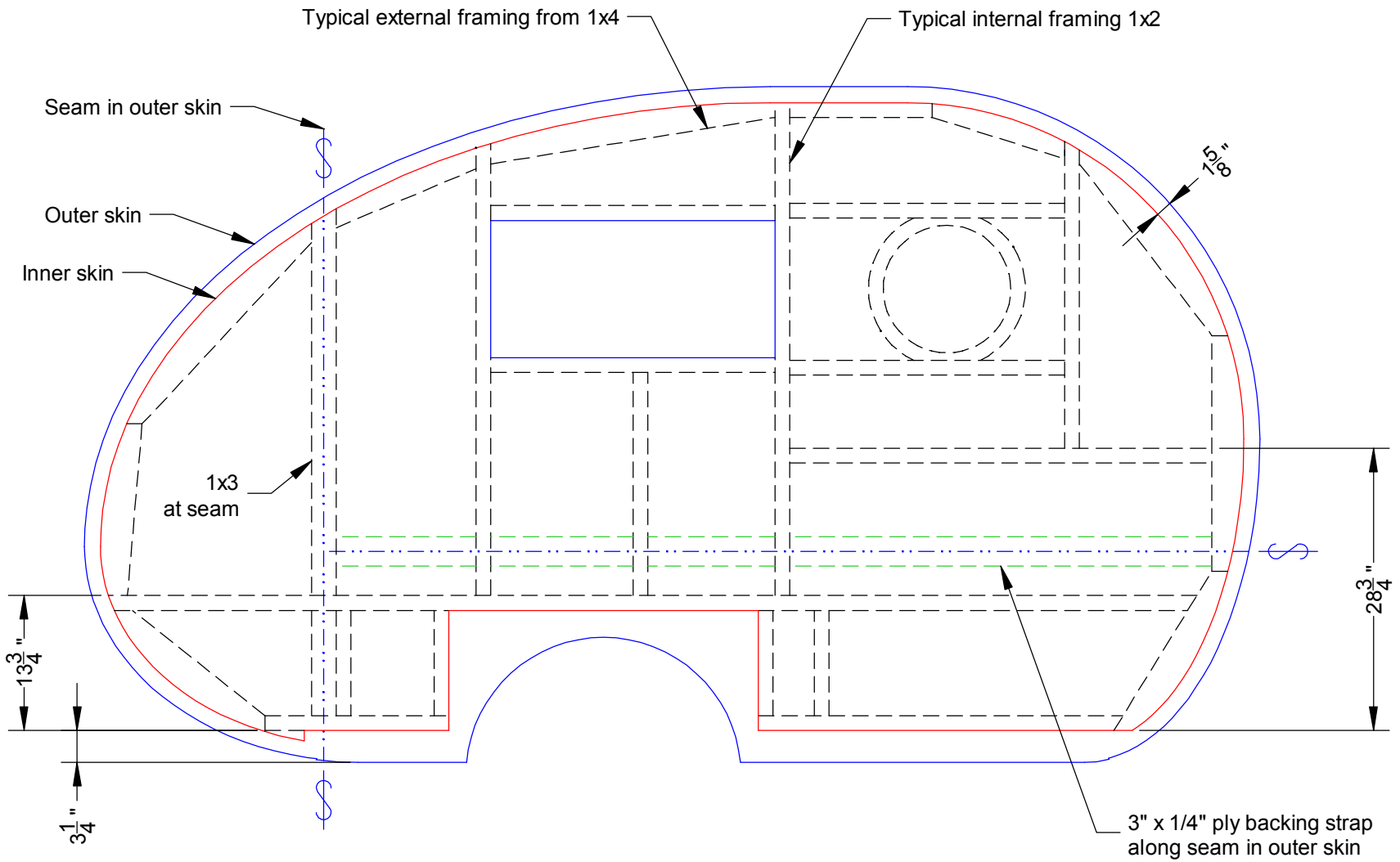


WIDGET 6
Structure 1
1:16 & 1:8

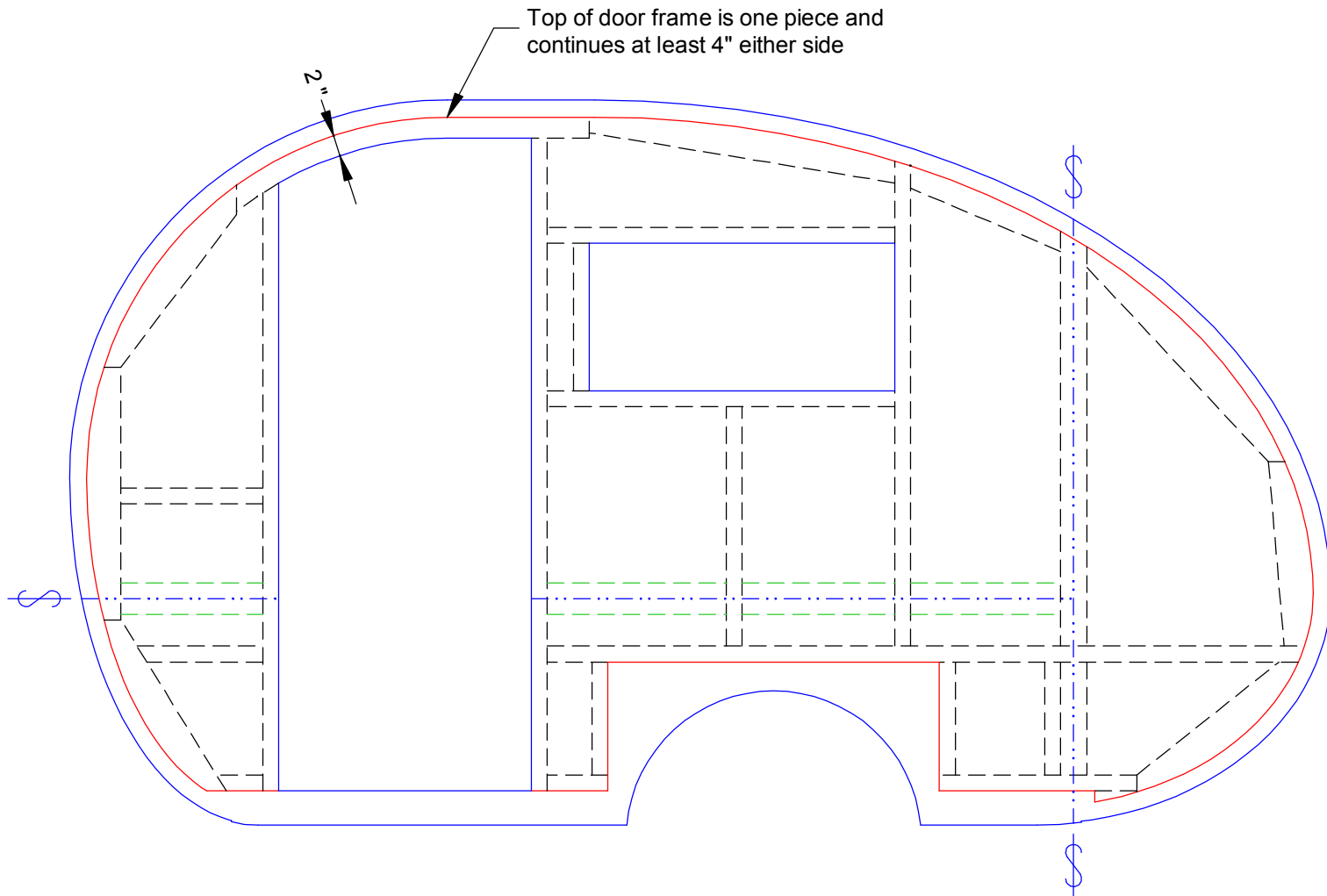
Floor Structure : 1/2" ply, 1x3 framing (except as shown)

Detail B
Front Chamfer

WIDGET 6
Structure 2
1:16

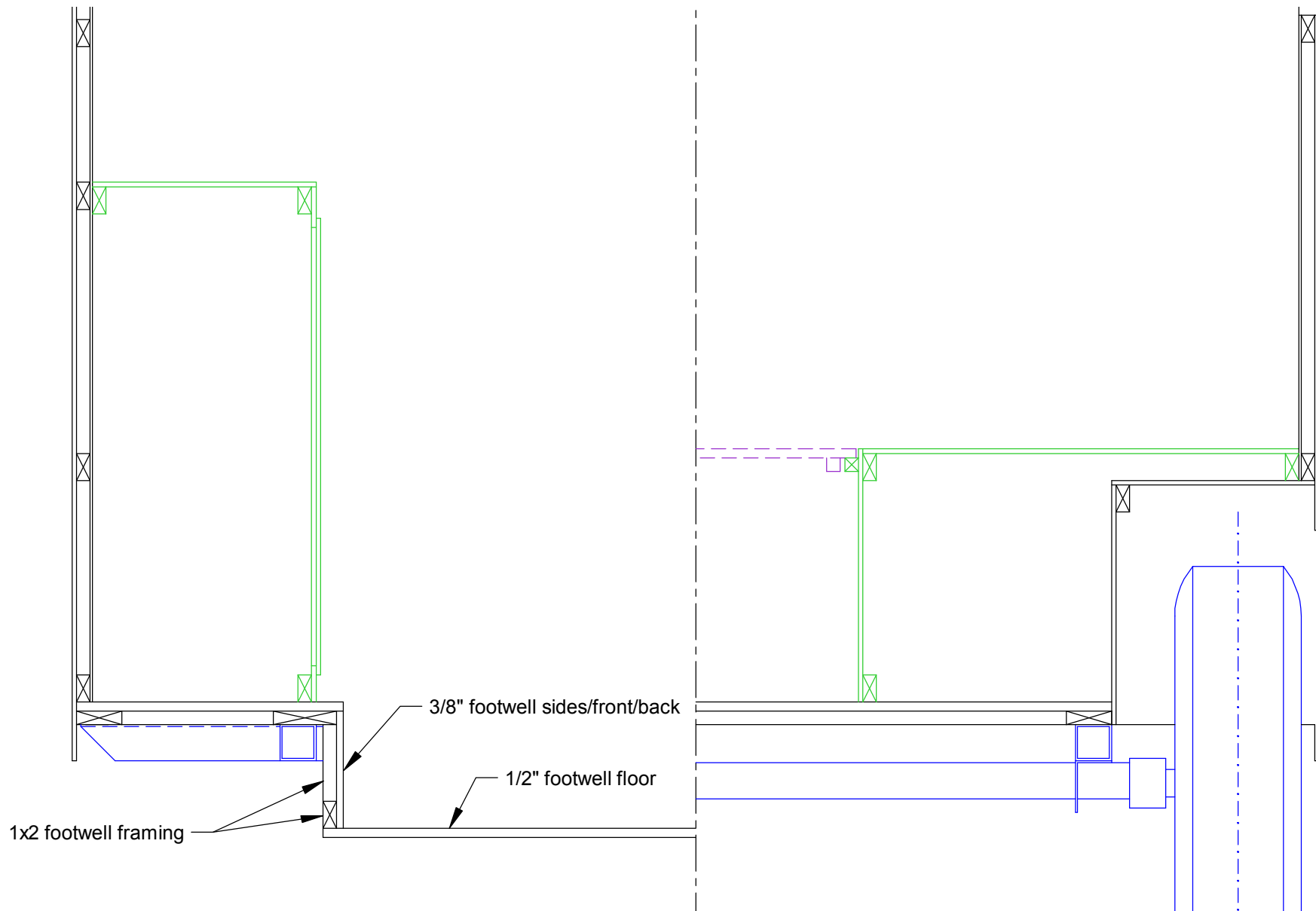


Left Side Panel - View on Inner Skin
Structure: 1/4" outer ply - 1x framing - 1/8" inner ply



Right Side Panel Structure - View on Inner Skin
See left side panel drawing for details

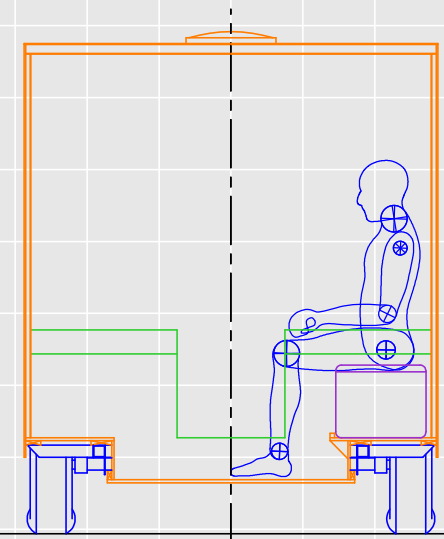
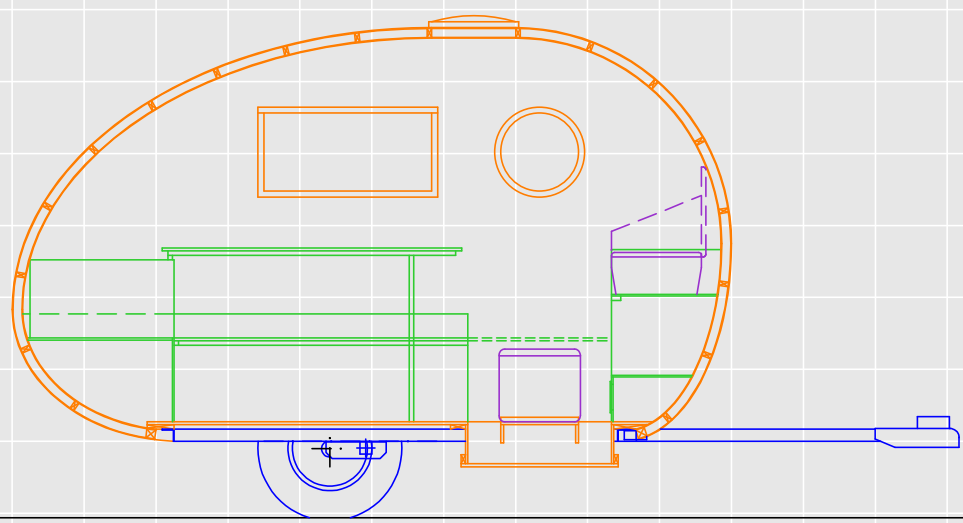
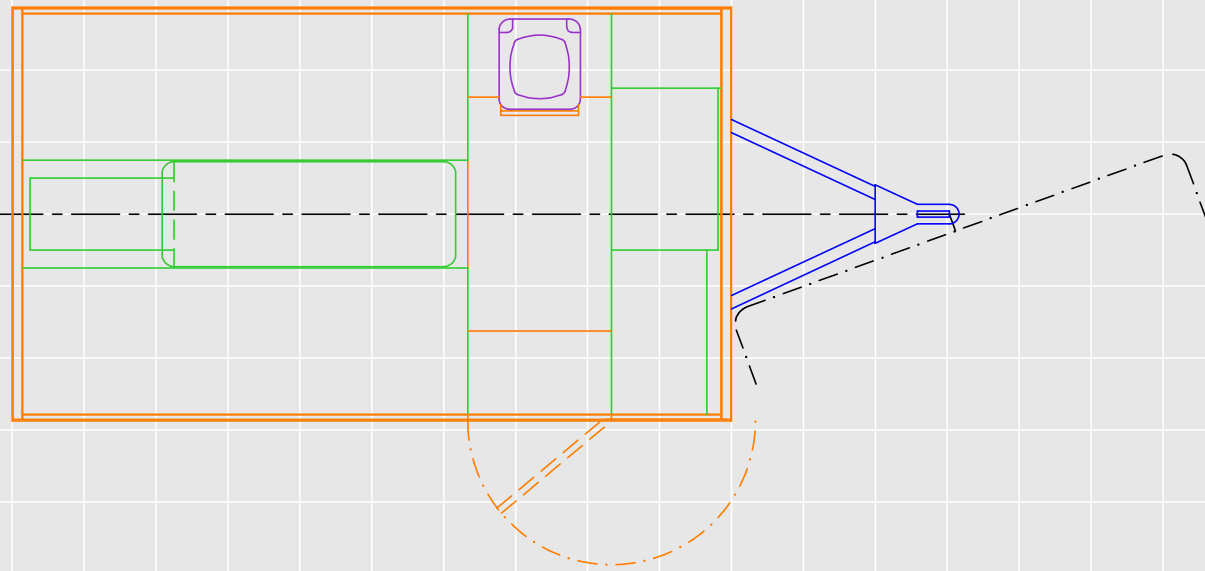
WIDGET 6
Structure 4
1:8



Section at footwell

Section at axle

WIDGET 6
Toilet 1



WIDGET 6
Toilet 2

